

APP CRS  
**181°**

Rwy Idg  
TDZE  
**314**

**5007**  
**314**  
**319**

**RNAV (GPS) RWY 18**  
RALPH C WEISER FLD (AGO)

RNP APCH - GPS.

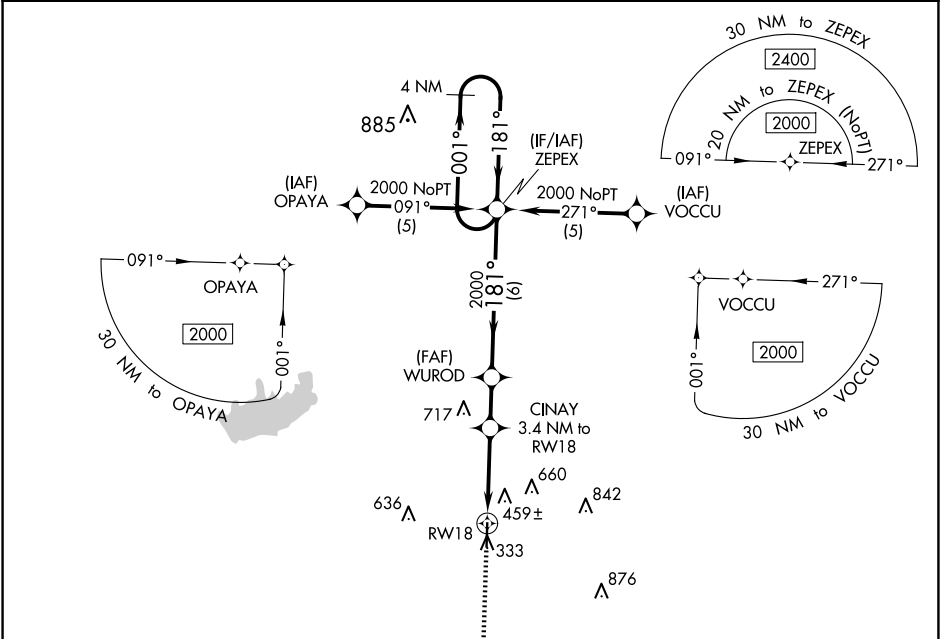
▼

NA

When local altimeter setting not received, use El Dorado altimeter setting and increase all MDAs 60 feet. VDP NA with El Dorado altimeter setting. Rwy 18 helicopter visibility reduction below ¾ SM NA.

MISSED APPROACH: Climb to 2000 direct REPAE and hold.

|                         |   |                                 |
|-------------------------|---|---------------------------------|
| AWOS-3<br><b>118.05</b> | FORT WORTH CENTER<br><b>128.2 269.1</b> | UNICOM<br><b>122.8 (CTAF) 0</b> |
|-------------------------|---|---------------------------------|



ELEV 319

TDZE 314

181° to RW18

81

0.4% UP

5007 X 100

36

MIRL Rwy 18-36

REIL Rwy 18 and 36

2000

REPAE

WUROD

ZEPEX

4 NM Holding Pattern

1.2 NM to RW18

3.4 NM to RW18

1.2

2.2 NM

1.8 NM

6 NM

1400

3.05°

TCH 40

181°

001°

2000

181°

| CATEGORY | A     | B           | C                            | D  |
|----------|-------|-------------|------------------------------|----|
| LNAV MDA | 980-1 | 666 (700-1) | 980-1 7/8<br>666 (700-1 7/8) | NA |
| CIRCLING | 980-1 | 661 (700-1) | 980-1 7/8<br>661 (700-1 7/8) | NA |

SC-1, 07 AUG 2025 to 04 SEP 2025

SC-1, 07 AUG 2025 to 04 SEP 2025