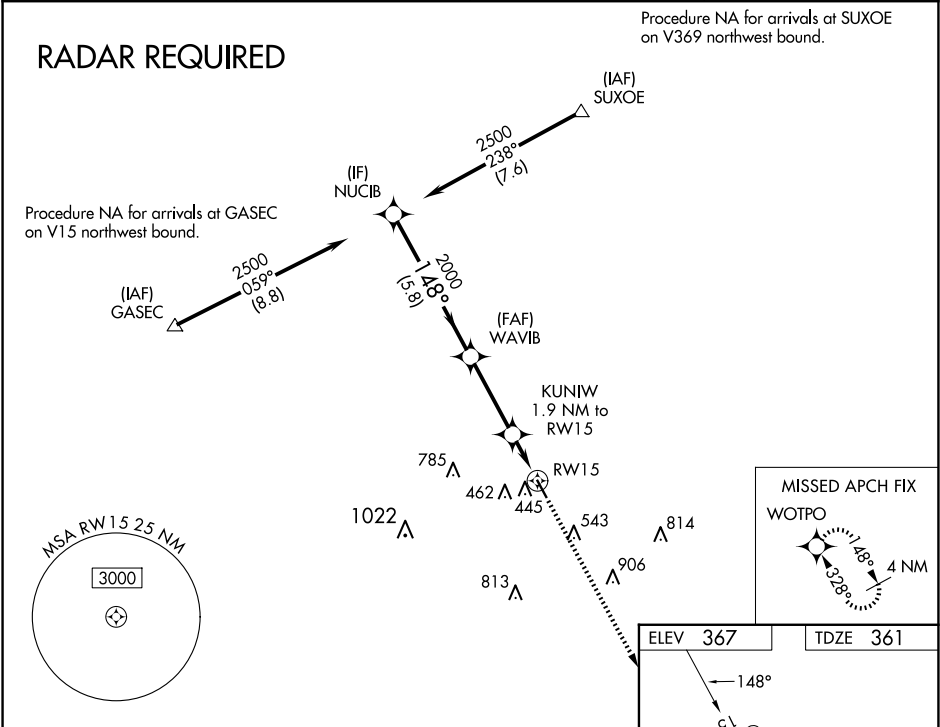


WAAS CH <b>69403</b> <b>W15A</b>	APP CRS <b>148°</b>	Rwy Idg TDZE <b>361</b> Apt Elev <b>367</b>
--	------------------------	---

RNAV (GPS) RWY 15

COULTER FLD (CFD)

RNP APCH. Baro-VNAV NA. Rwy 15 helicopter visibility reduction below ¾ SM NA. Use College Station altimeter setting; when not received, use Caldwell altimeter setting and increase all DA 31 feet and all MDA 40 feet.		MISSED APPROACH: Climb to 2000 direct WOTPO and hold.	
AWOS-3PT <b>125.975</b>	CLL ASOS <b>126.85</b>	HOUSTON APP CON <b>134.3 360.85</b>	UNICOM <b>123.0 (CTAF) 0</b>



VGSI and RNAV glidepath not coincident (VGSI Angle 3.50/TCH 40).				
*LNNAV only.				
5.8 NM 3.1 NM 1.9 NM				
CATEGORY	A	B	C	D
LPV DA	636-1	275 (300-1)	NA	
LNNAV/VNAV DA	636-1	275 (300-1)	NA	
LNNAV MDA	720-1	359 (400-1)	NA	

