

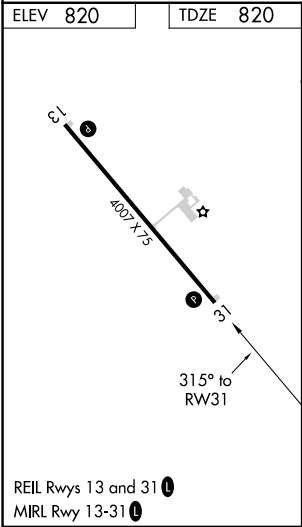
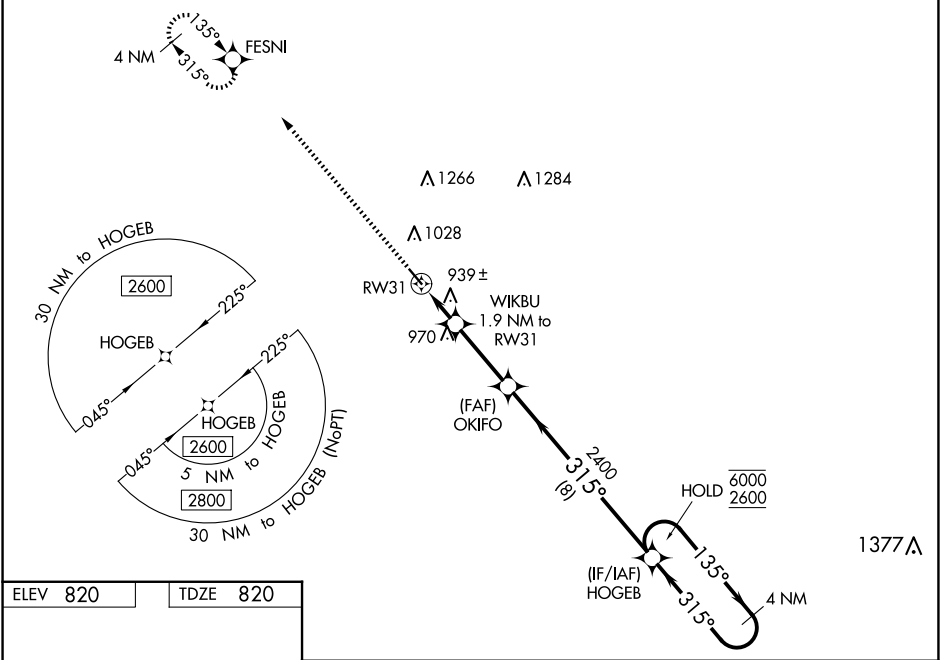
WAAS CH 45933 W31A	APP CRS 315°	Rwy Idg TDZE Apt Elev	4007 820 820
--	------------------------	-----------------------------	---

RNAV (GPS) RWY 31

HALLOCK MUNI (HCO)

RNP APCH-GPS.	MISSED APPROACH: Climb to 3300 direct FESNI and hold, continue climb-in-hold to 3300.
For uncompensated Baro-VNAV systems, LNAV/VNAV NA below -16°C or above 54°C. When local altimeter setting not received, use Grafton altimeter setting and increase LPV DA To 1082 feet; increase LNAV/VNAV DA to 1132 feet; increase all MDAs 80 feet and LNAV visibility Cat C ¾ SM, and Circling visibility Cat C ¼ SM. Baro-VNAV and VDP NA when using Grafton altimeter setting.	

AWOS-3 126.475	MINNEAPOLIS CENTER 132.15 269.6	UNICOM 122.8 (CTAF) 0
--------------------------	---	---------------------------------



3300	FESNI	WIKBU 1.9 NM to RWY 31	OKIFO	HOGOEB	4 NM Holding Pattern
		1.1 NM to RWY 31	2400		135° → 6000 ← 315° 2600
		1.1 NM	0.8	2.9 NM	8 NM
			1460	2400	GP 3.00° TCH 40
CATEGORY	A	B	C	D	
LPV DA	1020-1	200 (200-1)		NA	
LNAV/VNAV DA	1070-1	250 (300-1)		NA	
LNAV MDA	1200-1	380 (400-1)		NA	
CIRCLING	1380-1	560 (600-1)	1380-1½ 560 (600-1½)	NA	

NC-1, 07 AUG 2025 to 04 SEP 2025

NC-1, 07 AUG 2025 to 04 SEP 2025