

WAAS  
CH **40333**  
**W13A**

APP CRS  
**135°**

Rwy Idg  
TDZE **820**  
Apt Elev **820**

**RNAV (GPS) RWY 13**

HALLOCK MUNI (HCO)

RNP APCH-GPS.

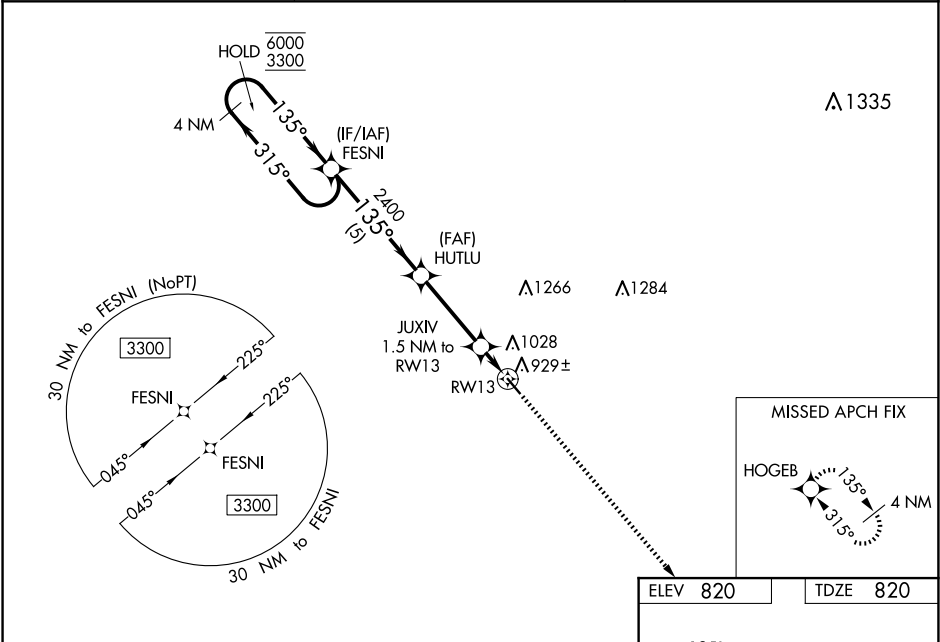
▼

⚠

Baro-VNAV NA when using Grafton altimeter setting. For uncompensated Baro-VNAV systems, LNAV/VNAV NA below -16°C or above 54°C. When local altimeter setting not received, use Grafton altimeter setting and increase LPV DA to 1082 feet; increase LNAV/VNAV DA to 1161 feet; increase all MDAs 80 feet and LNAV visibility Cat C ¼ SM, and Circling visibility Cat C ¼ SM.

MISSED APPROACH: Climb to 2800 direct HOGEB and hold.

AWOS-3 <b>126.475</b>	MINNEAPOLIS CENTER <b>132.15 269.6</b>	UNICOM <b>122.8 (CTAF) 0</b>
--------------------------	---	---------------------------------



4 NM Holding Pattern

FESNI

HUTLU

JUXIV 1.5 NM to RW13

RW13

2800 HOGEB

135° to RW13

400' x 75'

GP 3.00°	TCH 45	5 NM	3.3 NM	1.5 NM
CATEGORY	A	B	C	D
LPV DA	1020-1	200 (200-1)	NA	NA
LNAV/VNAV DA	1099-1	279 (300-1)	NA	NA
LNAV MDA	1180-1	360 (400-1)	NA	NA
CIRCLING	1380-1	560 (600-1)	1380-1½ 560 (600-1½)	NA

REIL Rwy 13 and 31 0  
MIRL Rwy 13-31 0