

WAAS CH 50433 W31A	APP CRS 307°	Rwy Idg TDZE 589 Apt Elev 598	5003
--	------------------------	---	-------------

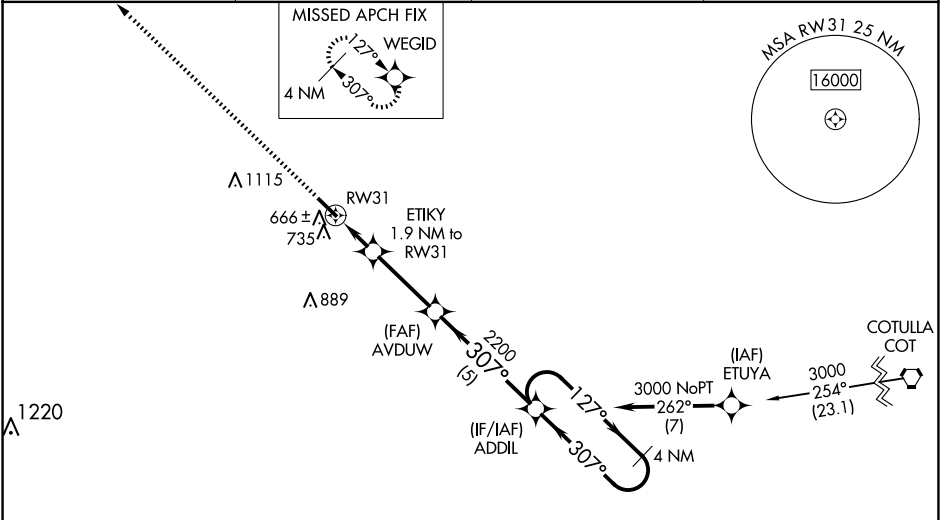
RNAV (GPS) RWY 31
DIMMIT COUNTY (CZT)

NA

Baro-VNAV NA. DME/DME RNP-0.3 NA. Use Cotulla altimeter setting; when not received use Uvalde altimeter setting and increase all DA 52 feet, all MDA 60 feet and increase LPV all Cnts, LNAV/VNAV all Cnts, and Circling Cat C visibility ¼ mile. Helicopter visibility reduction below ¾ SM NA.

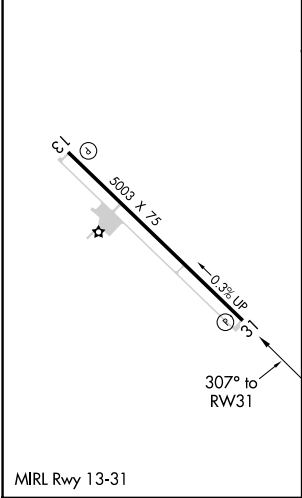
MISSED APPROACH:
Climb to 3000 direct WEGID and hold.

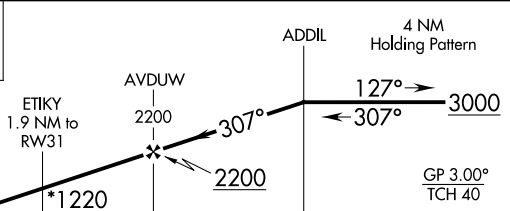

AWOS-3 119.625	COT ASOS 118.325	HOUSTON CENTER 127.8 307.2	UNICOM 122.8 (CTAF)
--------------------------	----------------------------	--------------------------------------	-------------------------------



Procedure NA for arrivals at COT VORTAC on V17 northbound.

ELEV 598	TDZE 589
-----------------	-----------------



3000 ↑	WEGID ✦				
*LNAV only.					
CATEGORY	A	B	C	D	
LPV DA	931-1½	342 (400-1½)		NA	
LNAV/VNAV DA	931-1½	342 (400-1½)		NA	
LNAV MDA	1040-1	451 (500-1)	1040-1¾ 451 (500-1¾)	NA	
 CIRCLING	1160-1 562 (600-1)	1240-1 642 (700-1)	1500-2¾ 902 (1000-2¾)	NA	