

▼

NA

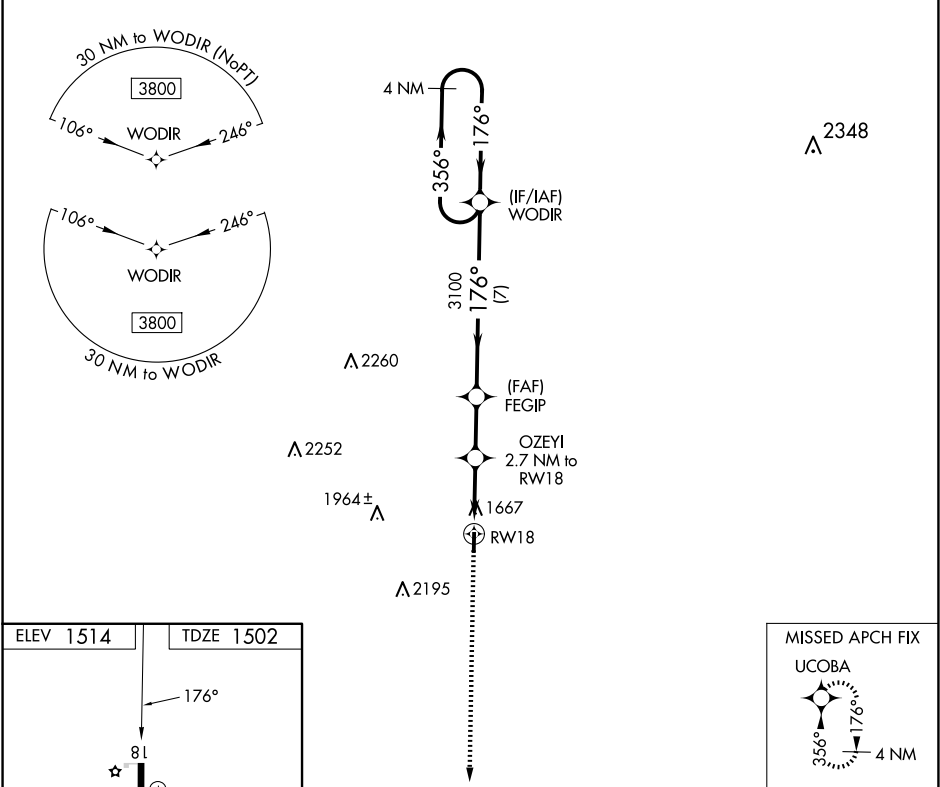
Rwy 18/36 helicopter visibility reduction below 1 SM NA.  
DME/DME RNP-0.3 NA. Procedure NA at night.  
Use Brady altimeter setting; when not received, use Llano altimeter setting and increase all MDAs 20 feet.

MISSED APPROACH: Climb to 3800 direct UCOBA and hold.

BBD AWOS-3  
118.375

HOUSTON CENTER  
132.35 317.5

CTAF  
122.9



ELEV 1514

TDZE 1502

176°

81

3716 X 50

36

3800

UCOBA

Visual Segment - Obstacles.

4 NM Holding Pattern

WODIR

356°

176°

3800

3100

FEGIP

OZEYI 2.7 NM to RW18

2380

2.7 NM

2.2 NM

7 NM

RW18

| CATEGORY | A      | B           | C  | D |
|----------|--------|-------------|----|---|
| LNAV MDA | 2080-1 | 578 (600-1) | NA |   |
| CIRCLING | 2140-1 | 626 (700-1) | NA |   |