

22363

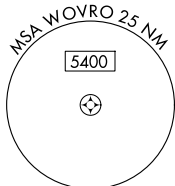
RNAV (GPS)-B

FIREBAUGH (F34)

MISSED APPROACH: Climb to 2000 then climbing right turn to 3000 direct MENDO and hold.

T Procedure NA at night. Use Madera altimeter setting, when not
A NA received, use Merced Yosemite Rgnl altimeter setting.

NORCAL APP CON
120.95 269.45

CTAF
122.9 **L**

• 3719

Procedure NA for arrival on PXN VORTAC
airway radials 318 CW 133.

(IAF)
PANOCH
PXN

(IF)

2000
-044
(6.8)

(FAF)
CUMKA

(MAP) 301
WOVRO 

A close-up of a protractor with degree markings. The number 061° is visible on the left, and 241° is visible on the right. A small triangle is positioned near the 241° mark.

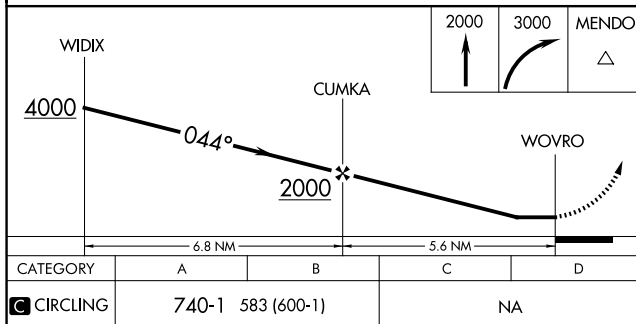
• 3663

2684

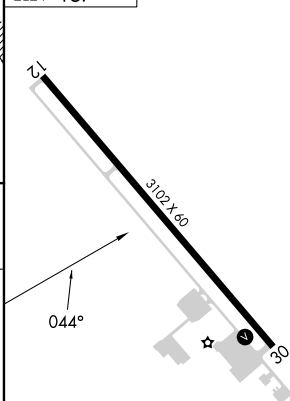
LEMOORE A MOA

• 3828

3721



ELEV 157

MIRL Rwy 12-30 **L**

FIREBAUGH (F34)
RNAV (GPS)-B