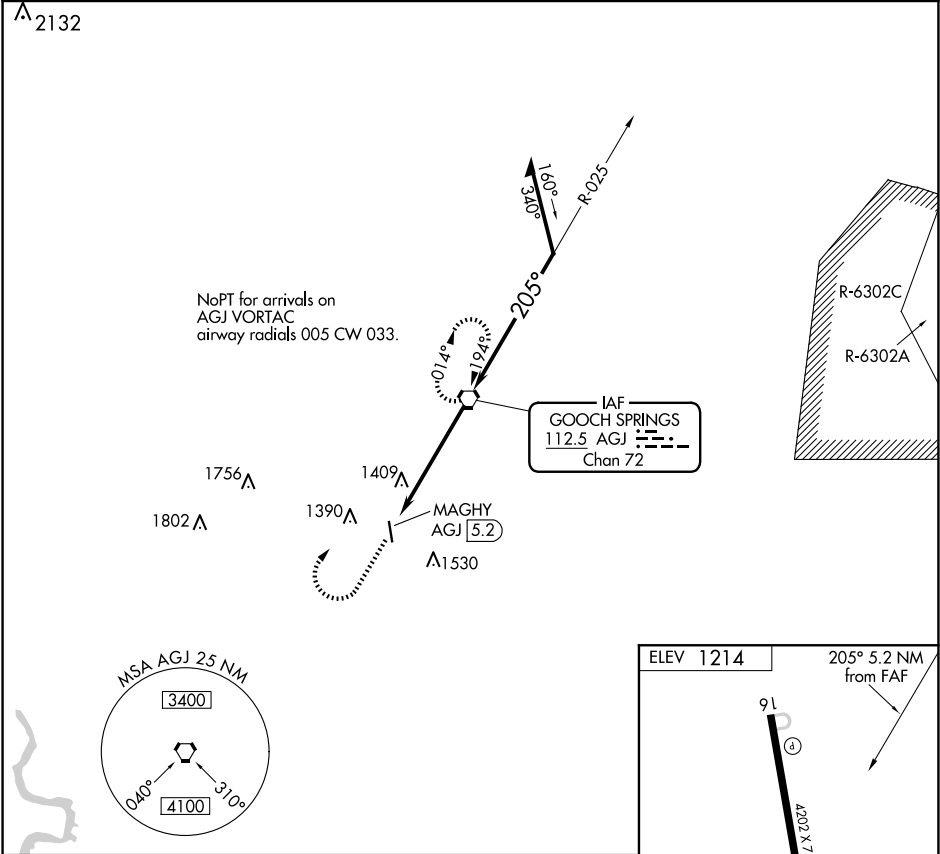


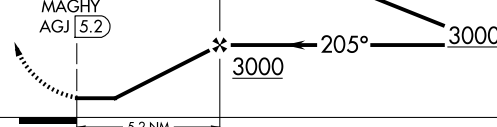
VORTAC AGJ	APP CRS	Rwy Idg	N/A
112.5	205°	TDZE	N/A
Chan 72		Apt Elev	1214

VOR-A  
LAMPASAS (LZZ)

<p>▼ When local altimeter setting not received, use Robert Gray AAF altimeter setting and increase all MDAs 80 feet and visibility Cat C ½ SM. Circling Rwy 16 NA at night. Rwy 16 helicopter visibility reduction below 1 SM NA.</p>	MISSED APPROACH: Climb to 2000 then climbing right turn to 3000 direct AGJ VORTAC and hold.
---	---

AWOS-3 119.075	GRAY APP CON 120.075 323.15	UNICOM 122.8 (CTAF) 0
-------------------	--------------------------------	--------------------------



2000	3000	AGJ		
↑	↷	⬡		
				
CATEGORY	A	B	C	D
CIRCLING	1680-1 466 (500-1)	1880-1 666 (700-1)	1880-1¾ 666 (700-1¾)	NA

ELEV 1214

205° 5.2 NM  
from FAF

9L

(d)

4202 X 75

☆

(P)

1.4% UP

34

MIRL Rwy 16-34 0

FAF to MAP 5.2 NM

Knots	60	90	120	150	180
Min:Sec	5:12	3:28	2:36	2:05	1:44