

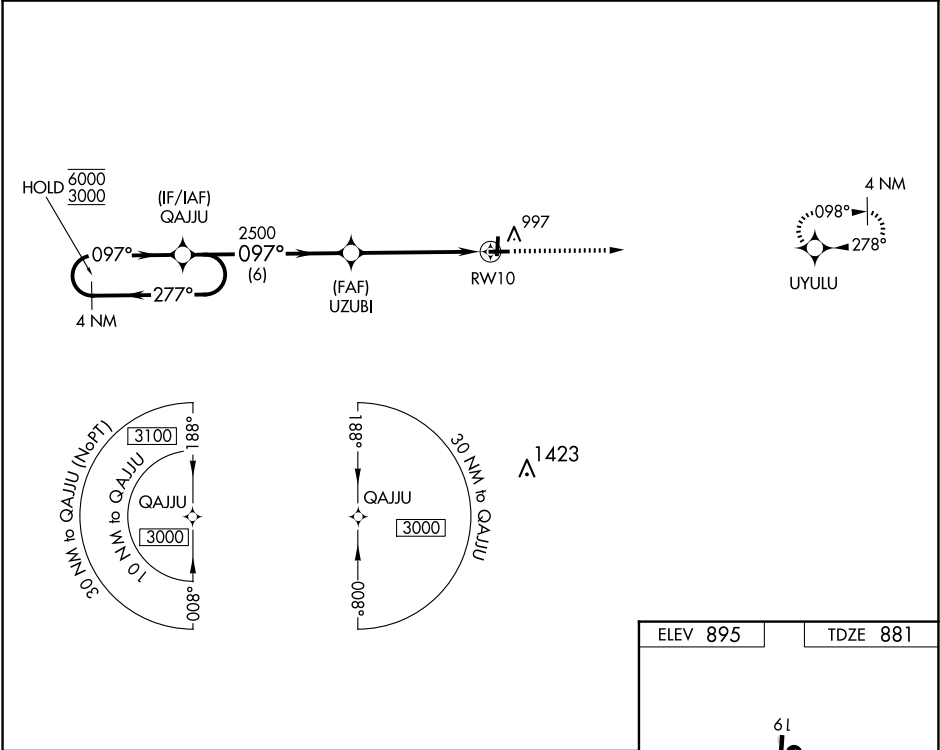
APP CRS	Rwy Idg	3795
097°	TDZE	881
	Apt Elev	895

RNAV (GPS) RWY 10

MARLETTE TOWNSHIP (77G)

RNP APCH - GPS.	<p>▼ Rwy 10 helicopter visibility reduction below 1 SM NA. Straight-in Rwy 10 NA at night, Circling Rwy 10,19 NA at night. Use Caro altimeter setting, when not received, use Bad Axe altimeter setting and increase all MDAs 20 feet and LNAV visibility Cat C/D ½ SM.</p>	MISSED APPROACH: Climb to 2700 direct UYULU and hold.
-----------------	---	--

CFS AWOS-3 119.275	CLEVELAND CENTER 127.7 290.425	UNICOM 122.8 (CTAF) 0
-----------------------	-----------------------------------	--------------------------



4 NM Holding Pattern		VGSI and RNAV glidepath not coincident (VGSI Angle 3.00/TCH 44).		2700	UYULU
CATEGORY	A	B	C	D	
LNAV MDA	1420-1	539 (600-1)	1420-1½	539 (600-1½)	
CIRCLING	1460-1	565 (600-1)	1460-1½	1560-2	
			565 (600-1½)	665 (700-2)	MIRL Rwy 1-19 and 10-28 0

EC-1, 07 AUG 2025 to 04 SEP 2025

EC-1, 07 AUG 2025 to 04 SEP 2025