

APP CRS
087°

Rwy Idg
TDZE **146**
Apt Elev **146**

RNAV (GPS) RWY 9

DAVID G JOYCE (ØR5)

RNP APCH - GPS.

▼
NA

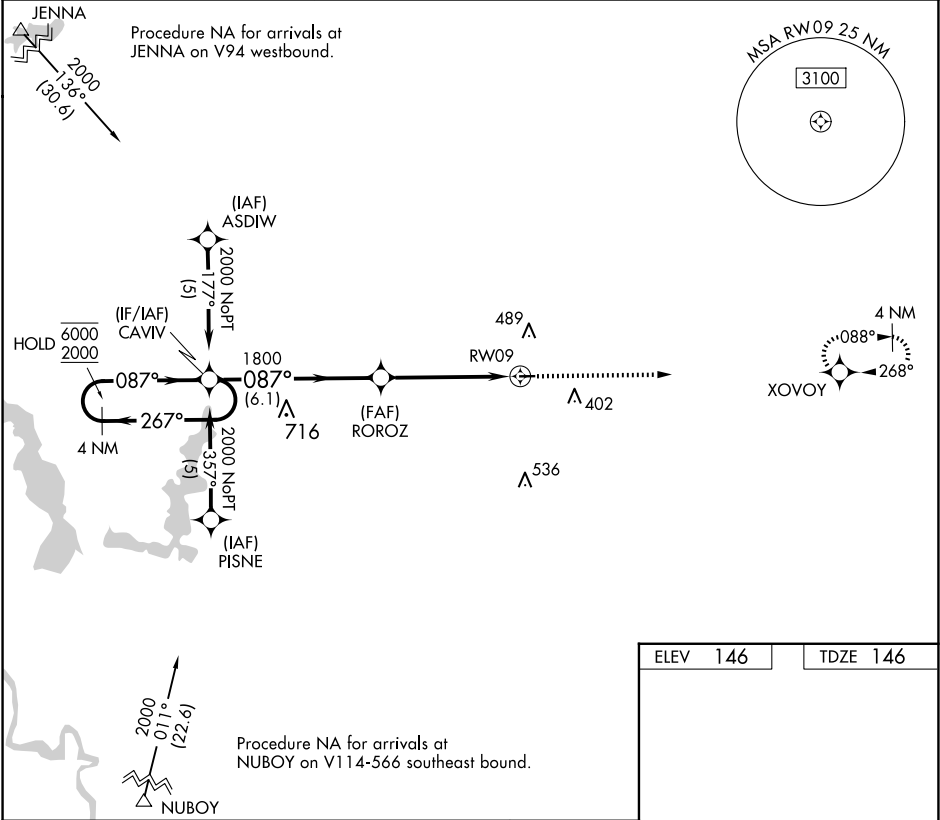
Procedure NA at night. Rwy 9 helicopter visibility reduction below 1 SM NA. Use Alexandria Intl altimeter setting, when not received use Esler Rgnl altimeter setting.

MISSED APPROACH: Climb to 2000 direct XVOY and hold.

AEX ASOS
123.975

POLK APP CON
125.4 302.2

UNICOM
122.7 (CTAF) 0



4 NM Holding Pattern

CAVIV

ROROZ

RW09

XVOY

2000

6000

2000

1800

3.04°

TCH 45

6.1 NM

5 NM

3002 X 100

0.9% UP

087° to RW09

CATEGORY	A	B	C	D
LNAV MDA	780-1	634 (700-1)	NA	
CIRCLING	780-1 634 (700-1)	900-1 754 (800-1)	NA	

MIRL Rwy 9-27 0
REIL Rwy 9 and 27 0