

VORTAC OKW

111.0

Chan 47

APP CRS

076°

Rwy Ldg

6007

TDZE

700

Apt Elev

700

VOR RWY 5

BESSEMER NTL (EKY)

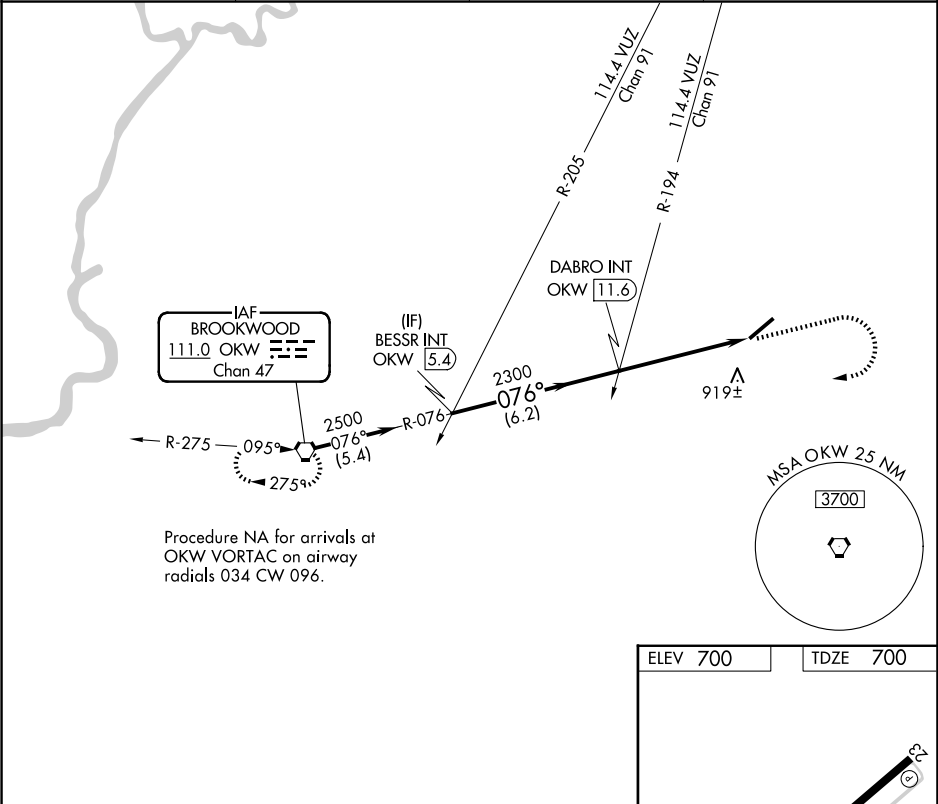
▼

NA

Inoperative table does not apply. When local altimeter setting not received, use Alabaster altimeter setting and increase all MDAs 60 feet; increase S-5 Cat C visibility 1/8 SM and Circling Cat D visibility 1/4 SM.

MISSED APPROACH: Climb to 1500 then climbing right turn to 3000 direct OKW VORTAC and hold.

AWOS-3PT 118.825	BIRMINGHAM APP CON 124.9 351.85	CLNC DEL 123.75	UNICOM 123.0 (CTAF) 0
---------------------	------------------------------------	--------------------	--------------------------



Procedure Turn NA

BESSR INT OKW 5.4

2500

076°

DABRO INT OKW 11.6

2300

3.02° TCH 45

OKW 16.4

6.2 NM

4.9 NM

VGSI and descent angles not coincident (VGSI Angle 3.00/TCH 60).

CATEGORY	A	B	C	D
S-5	1180-1 480 (500-1)		1180-1 3/8 480 (500-1 3/8)	1180-1 1/2 480 (500-1 1/2)
CIRCLING	1200-1 500 (500-1)		1220-1 1/2 520 (600-1 1/2)	1320-2 620 (700-2)

ELEV 700

TDZE 700

6007 X 100

076°

HIRL Rwy 5-23 0

REIL Rwy 5 and 23 0

FAF to MAP 4.9 NM

Knots	60	90	120	150	180
Min:Seq	4:54	3:16	2:27	1:58	1:38

SE-4, 07 AUG 2025 to 04 SEP 2025

SE-4, 07 AUG 2025 to 04 SEP 2025