

WAAS CH 65999 W05A	APP CRS 053°	Rwy Ldg TDZE 700 Apt Elev 700
--	------------------------	---

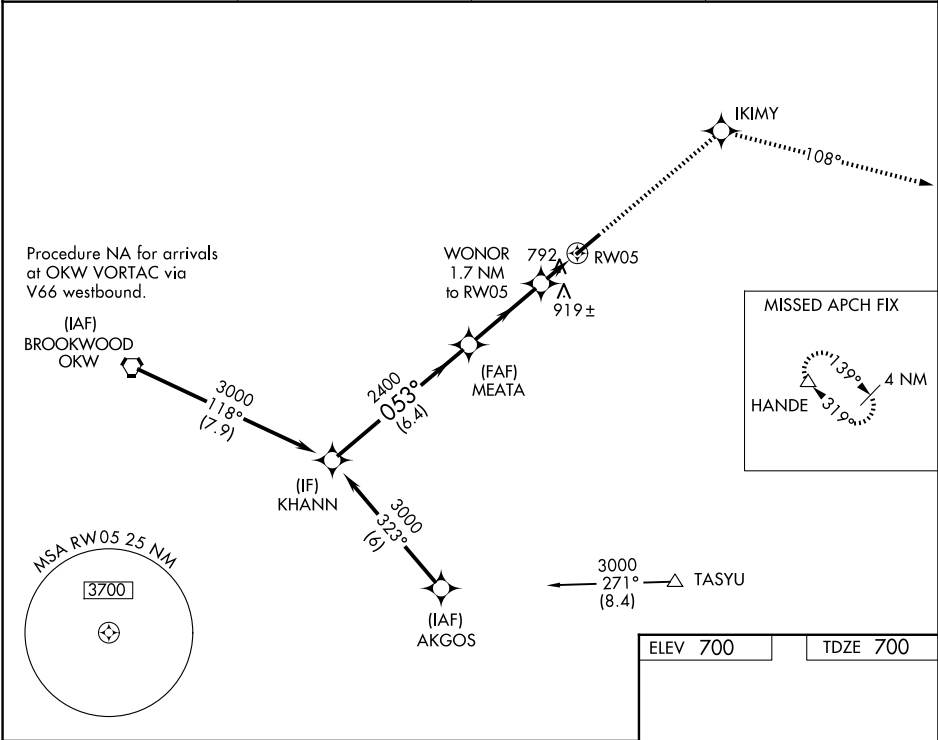
RNAV (GPS) RWY 5
BESSEMER NTL (EKY)

NA

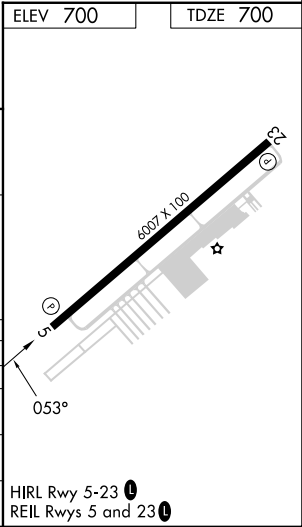
Baro-VNAV NA when using Alabaster altimeter setting. For uncompensated Baro-VNAV systems, LNAV/VNAV NA below -16°C (4°F) or above 54°C (130°F). DME/DME RNP-0.3 NA. When local altimeter setting not received, use Alabaster altimeter setting and increase LPV DA to 941 feet, LNAV/VNAV DA to 1285 feet, and all MDAs 60 feet; increase Circling Cat D visibility ¼ SM.

MISSED APPROACH: Climb to 4000 direct IKIMY and on track 108° to HANDE and hold.

AWOS-3PT 118.825	BIRMINGHAM APP CON 124.9 351.85	CLNC DEL 123.75	UNICOM 123.0 (CTAF)
----------------------------	---	---------------------------	-------------------------------



Procedure Turn NA	KHANN			4000 ↑		IKIMY ✧	tr 108°	HANDE △
	<u>3000</u>			MEATA 2400	WONOR 1.7 NM to RW05	* LNAV only		
	053°			2400	*1300	RW05		
	GP 3.00° TCH 60			6.4 NM	3.4 NM	1.7 NM		
CATEGORY	A		B	C		D		
LPV DA			900-3/4	200 (200-3/4)				
LNAV/ VNAV DA			1244-2	544 (600-2)				
LNAV MDA	1160-1	460 (500-1)		1160-1 3/8 460 (500-1 1/8)		1160-1 1/2 460 (500-1 1/2)		
CIRCLING	1200-1	500 (500-1)		1220-1 1/2 520 (600-1 1/2)		1320-2 620 (700-2)		



SE-4, 07 AUG 2025 to 04 SEP 2025

SE-4, 07 AUG 2025 to 04 SEP 2025