

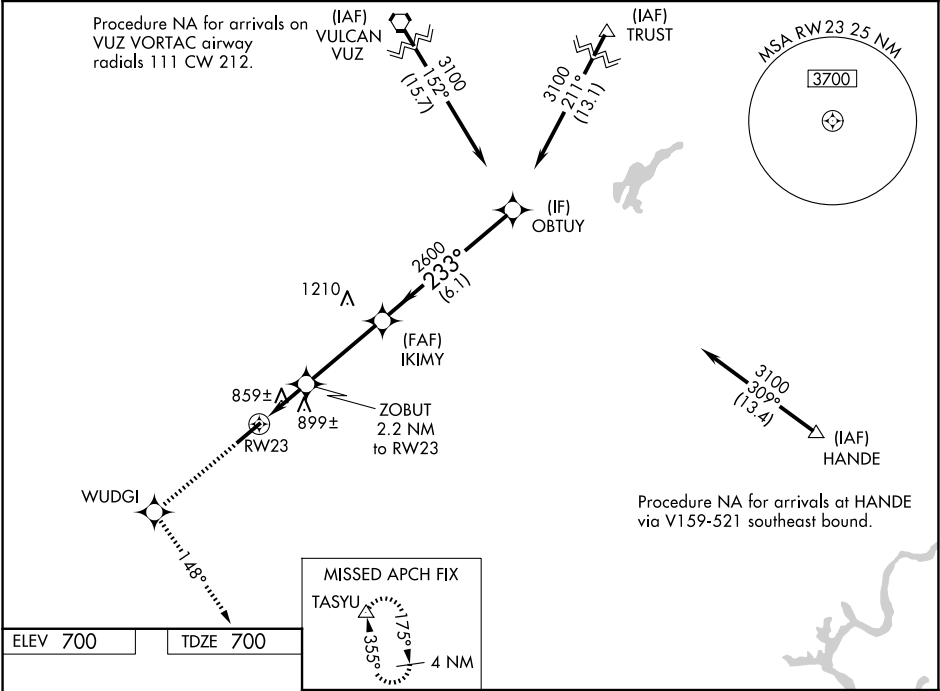
WAAS CH <b>82199</b> <b>W23A</b>	APP CRS <b>233°</b>	Rwy Ldg TDZE Apt Elev	<b>6007</b> <b>700</b> <b>700</b>
--	------------------------	-----------------------------	---

RNAV (GPS) RWY 23

BESSEMER NTL(EKY)

<div><div>▼</div><div>NA</div></div> <div>For uncompensated Baro-VNAV systems, LNAV/VNAV NA below -16°C (4°F) or above 54°C (130°F). DME/DME RNP-0.3 NA. Helicopter visibility reduction below ¼ SM NA. When local altimeter setting not received, use Alabaster altimeter setting and increase LPV DA to 1013 feet, LNAV/VNAV DA to 1211 feet, and all MDAs 60 feet; increase Circling Cat D visibility ¼ SM. Baro-VNAV and VDP NA when using Alabaster altimeter setting.</div>	MISSED APPROACH: Climb to 4000 direct WUDGI and on track 148° to TASYU and hold, continue climb-in-hold to 4000.
---	--

AWOS-3PT <b>118.825</b>	BIRMINGHAM APP CON <b>124.9 351.85</b>	CLNC DEL <b>123.75</b>	UNICOM <b>123.0 (CTAF)</b>
----------------------------	---	---------------------------	-------------------------------



4000 WUDGI tr 148° TASYU		*LNAV only		RW23 1.3 NM to RW23		ZOBUT 2.2 NM to RW23		IKIMY 2600		OBTUY 3100	
*1.3 NM to RW23		1440*		2600		233°		Procedure Turn NA		GP 3.00° TCH 40	
RW23		1.3 NM		0.9 NM		3.6 NM		6.1 NM			
CATEGORY		A		B		C		D			
LPV DA		972-1		272 (300-1)							
LNAV/ VNAV DA		1170-1¾		470 (500-1¾)							
LNAV MDA		1160-1 460 (500-1)		1160-1¾ 460 (500-1¾)		1160-1½ 460 (500-1½)					
CIRCLING		1200-1 500 (500-1)		1220-1½ 520 (600-1½)		1320-2 620 (700-2)					