

LOC/DME I-EKY
111.75
Chan **54** (Y)

APP CRS
053°

Rwy Ldg
TDZE
Apt Elev
6007
700
700

ILS or LOC RWY 5
BESSEMER NTL (EKY)

NA

When local altimeter setting not received, use Alabaster altimeter setting and increase DA 41 feet, increase all MDAs 60 feet; increase S-LOC 5 Cat C visibility $\frac{1}{8}$ SM and Cat D visibility $\frac{1}{4}$ SM, increase Circling Cat C visibility $\frac{1}{8}$ SM Cat D visibility $\frac{1}{4}$ SM, increase JURAM fix S-LOC 5 Cat C visibility $\frac{1}{8}$ SM and Cat D visibility $\frac{1}{4}$ SM; increase Circling Cat D visibility $\frac{1}{4}$ SM. VDP NA with Alabaster altimeter setting.

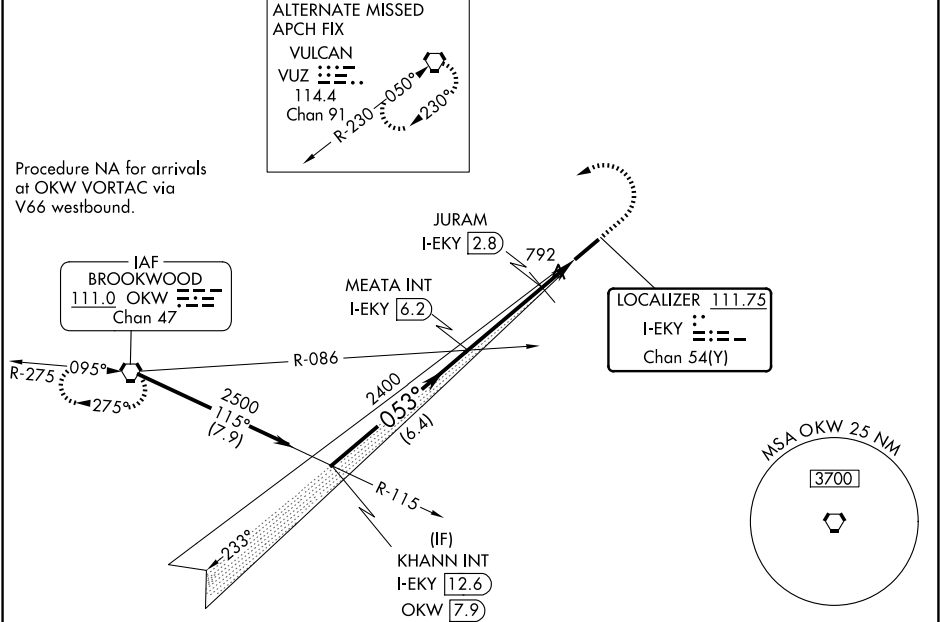
MISSED APPROACH: Climb to 1200 then climbing left turn to 3000 direct OKW VORTAC and hold.

AWOS-3PT
118.825

BIRMINGHAM APP CON
124.9 351.85

CLNC DEL
123.75

UNICOM
123.0 (CTAF) **0**



Procedure Turn NA

KHANN INT I-EKY 12.6

1260 when using Alabaster altimeter setting.

MEATA INT I-EKY 6.2

JURAM I-EKY 2.8

OKW I-EKY 1.2

* I-EKY 2.2

* LOC only

2500

053°

2400

2400

* 1200

6.4 NM

3.4 NM

0.6 NM

1.1 NM

ELEV 700

TDZE 700

GS 3.00°

TCH 60

6007 X 100

053°

CATEGORY	A	B	C	D
S-ILS 5	900- $\frac{3}{4}$ 200 (200- $\frac{3}{4}$)			
S-LOC 5	1200-1	500 (500-1)	1200- $1\frac{3}{8}$ 500 (500- $1\frac{1}{8}$)	1200- $1\frac{1}{2}$ 500 (500- $1\frac{1}{2}$)
CIRCLING	1200-1	500 (500-1)	1220- $1\frac{1}{2}$ 520 (600- $1\frac{1}{2}$)	1320-2 620 (700-2)
JURAM FIX MINIMUMS				
S-LOC 5	1100-1	400 (400-1)	1100- $1\frac{1}{8}$ 400 (400- $1\frac{1}{8}$)	1100- $1\frac{1}{4}$ 400 (400- $1\frac{1}{4}$)
CIRCLING	1200-1	500 (500-1)	1220- $1\frac{1}{2}$ 520 (600- $1\frac{1}{2}$)	1320-2 620 (700-2)

HIRL Rwy 5-23 **0**

REIL Rwy 5 and 23 **0**

FAF to MAP 5.1 NM

Knots	60	90	120	150	180
Min:Sec	5:06	3:24	2:33	2:02	1:42