

APP CRS
043°

Rwy Ldg
TDZE **77**
Apt Elev **78**

RNAV (GPS) RWY 4
MARKSVILLE MUNI (MKV)

RNP APCH - GPS.

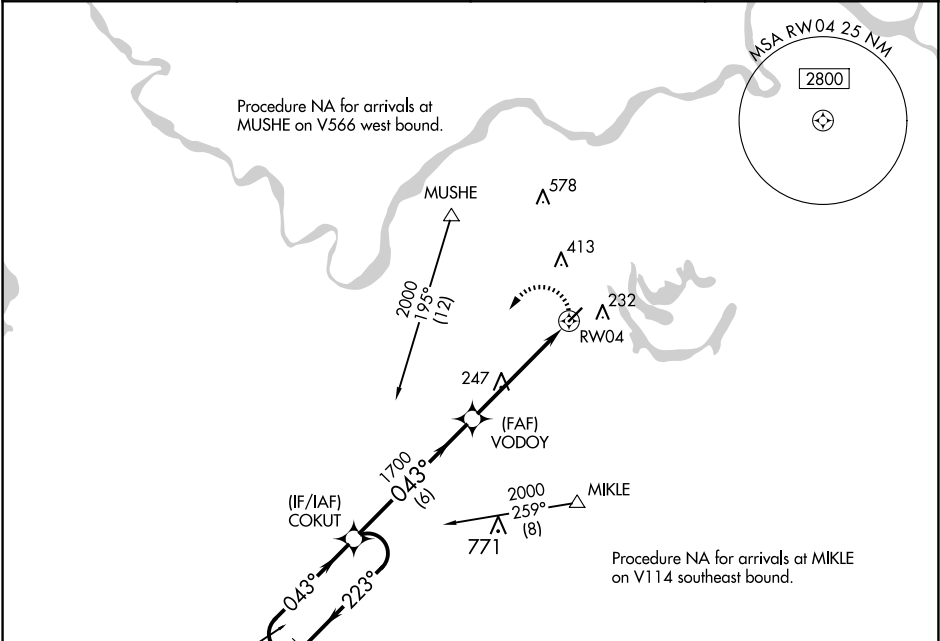
▼

NA

Circling Rwy 22 NA at night. Use Esler Rgnl altimeter setting. When not received, use Alexandria Intl. Rwy 4 helicopter visibility reduction below ¾ SM NA.

MISSED APPROACH: Climbing left turn to 2000 direct COKUT and hold.

AWOS-3PT 124.175	ESF ASOS 119.425	POLK APP CON 125.4 302.2	CTAF 122.9 0
----------------------------	----------------------------	------------------------------------	------------------------



ELEV **78**

TDZE **77**

4 NM Holding Pattern

VGSI and descent angles not coincident (VGSI Angle 3.00/TCH 50).

2000 COKUT

6000 2000 ← 223° 043° →

VODOY

3.04° TCH 40

1700

6 NM

4.9 NM

RW04

CATEGORY	A	B	C	D
LNAV MDA	680-1	603 (700-1)	NA	
CIRCLING	760-1 682 (700-1)	820-1 742 (800-1)	NA	

MIRL Rwy 4-22 0

REIL Rwy 4 and 22 0