

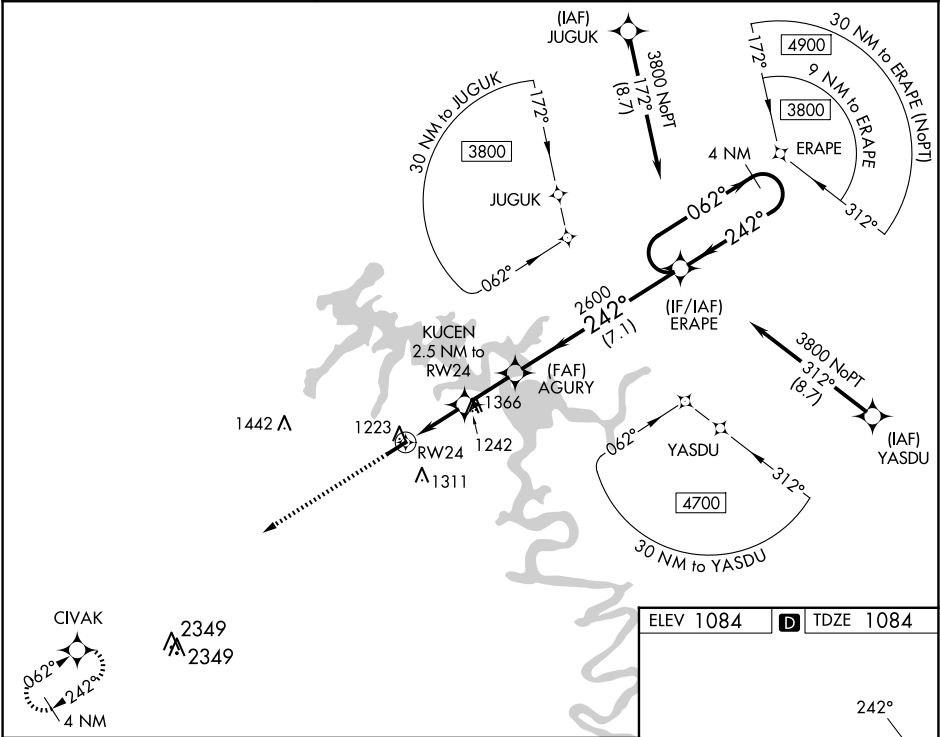
WAAS CH 93527 W24A	APP CRS 242°	Rwy Ldg TDZE Apt Elev	4106 1084 1084
--	------------------------	-----------------------------	---

RNAV (GPS) RWY 24

SMITHVILLE MUNI (ØA.3)

RNP APCH.	Baro-VNAV NA. Procedure NA at night. Rwy 24 helicopter visibility reduction below 1 SM NA. Use Sparta altimeter setting, when not received, use Tullahoma altimeter setting and increase LPV DA to 1455 feet; increase LNAV/VNAV DA to 1471 feet and all visibilities ½ SM, increase all MDA 60 feet and LNAV visibility Cat C ½ SM.	MISSED APPROACH: Climb to 3800 direct CIVAK and hold.
-----------	--	---

SRB AWOS-3 128.25	MEMPHIS CENTER 132.9 290.3	UNICOM 122.8 (CTAF)
-----------------------------	--------------------------------------	-------------------------------



ELEV 1084 TDZE 1084				
VGSI and RNAV glidepath not coincident (VGSI Angle 3.50/TCH 27).				
RW24				
KUCEN 2.5 NM to RW24				
AGURY 2600				
ERAPE 4 NM Holding Pattern				
GP 3.00° TCH 59				
CATEGORY	A	B	C	D
LPV DA	1402-1	318 (400-1)		NA
LNAV/VNAV DA	1418-1	334 (400-1)		NA
LNAV MDA	1520-1	436 (500-1)	1520-1¼ 436 (500-1¼)	NA

