

WAAS CH 61233 W29A	APP CRS 289°	Rwy Idg 3500 TDZE 1167 Apt Elev 1174
--	------------------------	---

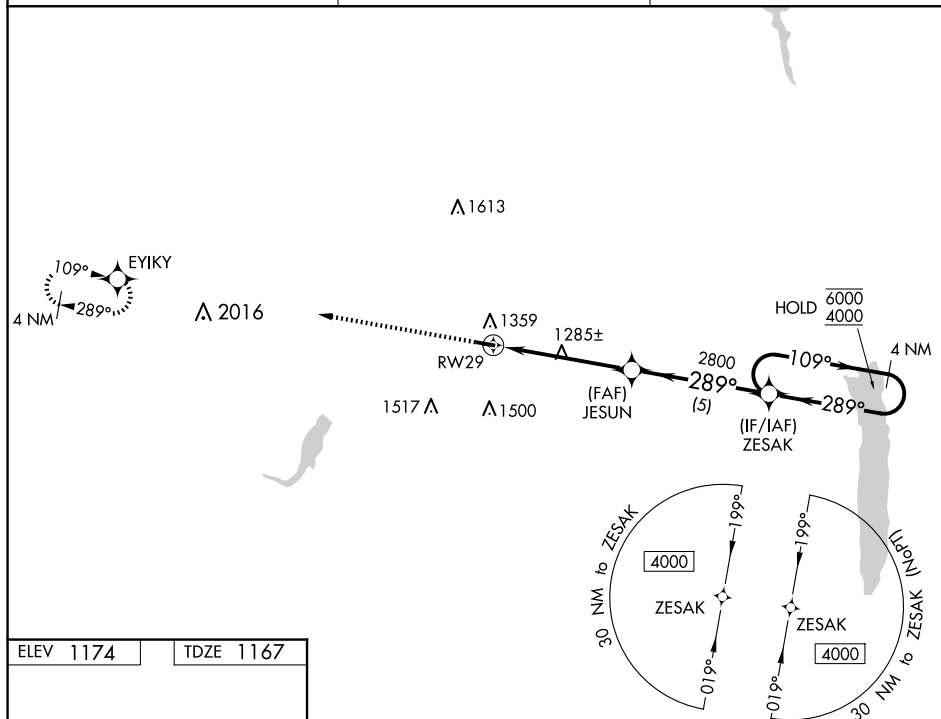
RNAV (GPS) RWY 29
GEAUGA COUNTY (7G8)

RNP APCH - GPS.

T Circling Rwy 11 NA at night. Rwy 29 helicopter visibility reduction below $\frac{3}{4}$ SM NA.
A NA Use Youngstown/Warren altimeter setting; when not received, use Cuyahoga County altimeter setting and increase all MDAs 40 feet and increase Circling Cat C visibility $\frac{1}{4}$ SM.

MISSED APPROACH:
Climb to 3100 direct
EYIKY and hold.

YNG ASOS	CLEVELAND APP CON	UNICOM
123.75	125.35 346.325	123.0 (CTAF) 0



ELEV 1174		TDZE 1167
-----------	--	-----------

