

WAAS CH 97633 W11A	APP CRS 109°	Rwy Idg TDZE 1172 Apt Elev 1174
--	------------------------	---

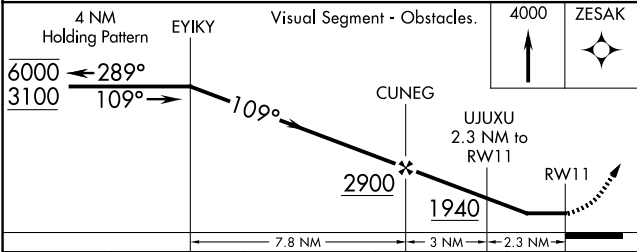
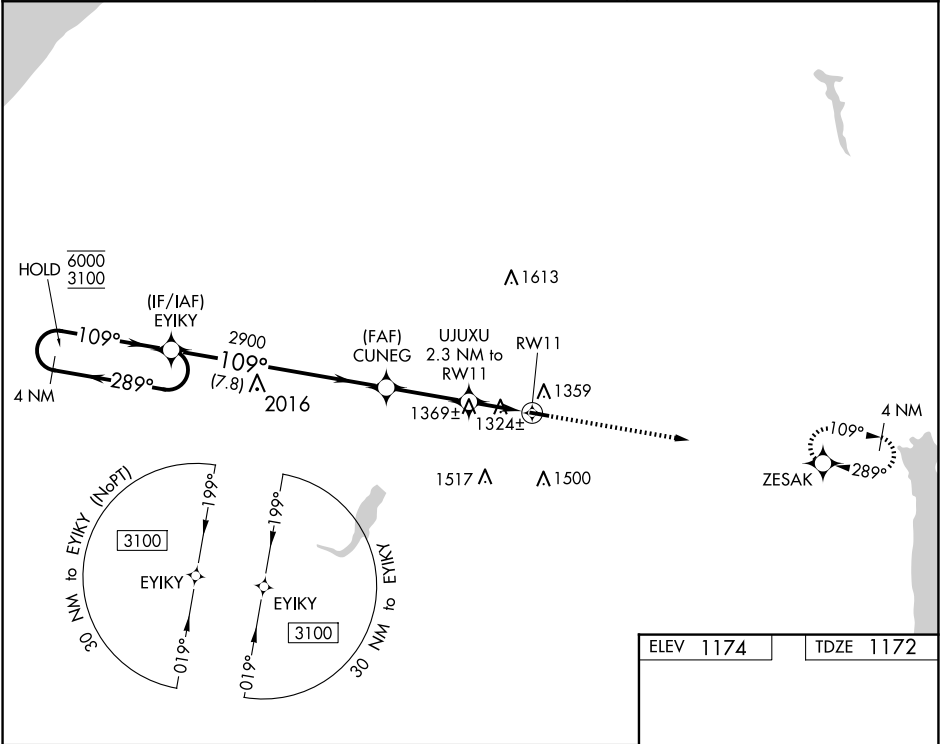
RNAV (GPS) RWY 11

GEAUGA COUNTY (7G8)

RNP APCH - GPS.

<div><div>▼</div><div>▲ NA</div></div> <div>Rwy 11 helicopter visibility reduction below 1 SM NA. Use Youngstown/Warren altimeter setting; when not received, use Cuyahoga County altimeter setting and increase all MDAs 40 feet and increase LNAV Cat C and Circling Cat C visibilities ¼ SM. Straight-in Rwy 11 NA at night, Circling Rwy 11 NA at night.</div>	MISSED APPROACH: Climb to 4000 direct ZESAK and hold, continue climb-in-hold 4000.
--	---

YNG ASOS 123.75	CLEVELAND APP CON 125.35 346.325	UNICOM 123.0 (CTAF) 0
---------------------------	--	---------------------------------



CATEGORY	A	B	C	D
LP MDA	1640-1	468 (500-1)	1640-1½ 468 (500-1½)	NA
LNAV MDA	1680-1	508 (600-1)	1680-1½ 508 (600-1½)	NA
◼ CIRCLING	1760-1	586 (600-1)	1900-2 726 (800-2)	NA

