

RNP APCH - GPS.

⚠ NA

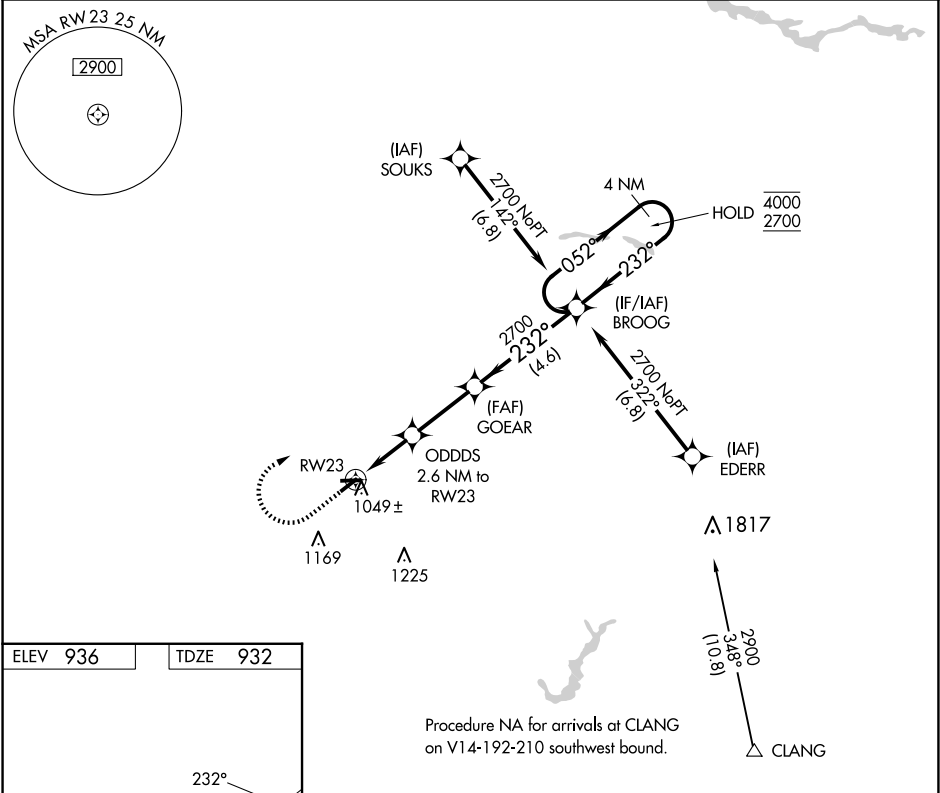
Circling NA to Rwy 9 and 27. Procedure NA at night. Rwy 23 helicopter visibility reduction below 1 SM NA. Use Indianapolis Exec altimeter setting.

MISSED APPROACH: Climb to 1800 then climbing right turn to 2700 direct BROOG and hold.

TYQ AWOS-3PT
120.725

INDIANAPOLIS APP CON
124.65 317.8

UNICOM
123.075 (CTAF) 



| |
|--|
| |
|--|

EC-2, 07 AUG 2025 to 04 SEP 2025

EC-2, 07 AUG 2025 to 04 SEP 2025