

WAAS CH 93825 W03A	APP CRS 027°	Rwy Idg 5500 TDZE 36 Apt Elev 36
--	------------------------	---

RNAV (GPS) RWY 3

PLYMOUTH MUNI (PMZ)

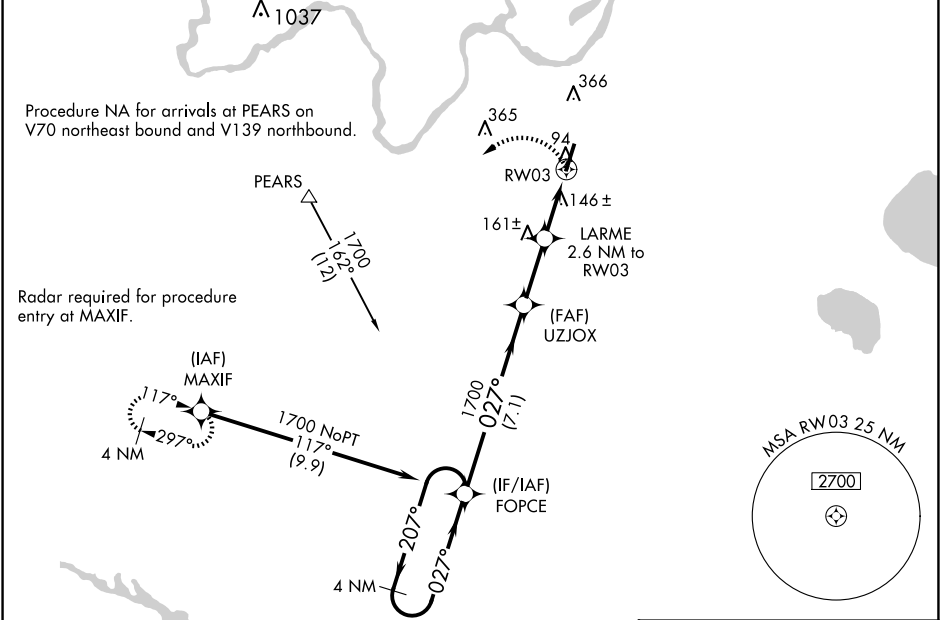
▼

NA

Use Northeastern Rgnl altimeter setting; when not received, use Coastal Carolina Rgnl altimeter setting and increase all MDA 80 feet; increase all Cat C visibilities ½ SM. When VGSi inop, procedure NA at night. DME/DME RNP-0.3 NA. Visibility reduction by helicopters NA.

MISSED APPROACH: Climbing left turn to 2000 direct MAXIF and hold.

CHERRY POINT APP CON 119.35 377.175	UNICOM 122.8 (CTAF)
---	-------------------------------



4 NM Holding Pattern

VGSI and descent angles not coincident (VGSI Angle 4.00/TCH 30).

2000 MAXIF

1700

207°

027°

1700

027°

1700

027°

900

3.00° TCH 40

RW03

7.1 NM

2.5 NM

2.6 NM

CATEGORY	A	B	C	D
LP MDA	440-1	404 (500-1)	440-1½ 404 (500-1½)	NA
LNAV MDA	460-1	424 (500-1)	460-1¼ 424 (500-1¼)	NA
CIRCLING	520-1 484 (500-1)	720-1 684 (700-1)	720-2 684 (700-2)	NA

