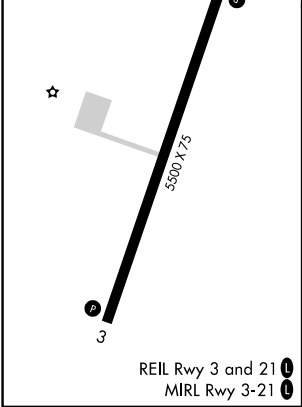
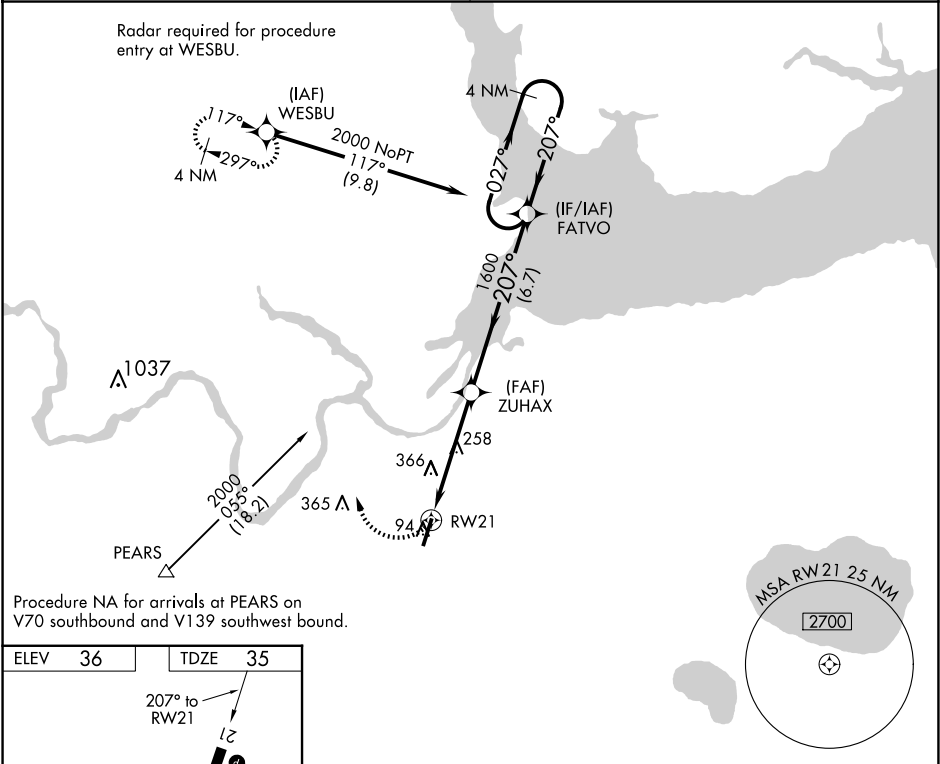


| | | | |
|--|------------------------|---|-------------|
| WAAS CH 63125 W21A | APP CRS 207° | Rwy Idg TDZE 35 Apt Elev 36 | 5500 |
|--|------------------------|---|-------------|

RNAV (GPS) RWY 21
PLYMOUTH MUNI (PMZ)

| | |
|---|--|
| <p>NA Use Northeastern Rgnl altimeter setting; when not received, use Coastal Carolina Rgnl altimeter setting and increase all MDA 80 feet; increase all Cat C visibilities ¼ SM. When VGSI inop, procedure NA at night. DME/DME RNP-0.3 NA.</p> | <p>MISSED APPROACH: Climbing right turn to 2000 direct WESBU and hold.</p> |
|---|--|

| | |
|---|---------------------------------|
| CHERRY POINT APP CON 119.35 377.175 | UNICOM 122.8 (CTAF) 0 |
|---|---------------------------------|



| | | | | |
|----------|----------------------|---|------------------------|------|
| 2000 | WESBU | VGSI and descent angles not coincident (VGSI Angle 4.00°/TCH 28). | | 4 NM |
| | | FATVO | Holding Pattern | |
| | | ZUHAX | | |
| | | RW21 | | |
| | | 1600 | | |
| | | 3.00° | | |
| | | TCH 40 | | |
| | | 4.8 NM | 6.7 NM | |
| CATEGORY | A | B | C | D |
| LP MDA | 600-1 | 565 (600-1) | 600-1½ 565 (600-1½) | NA |
| LNAV MDA | 660-1 | 625 (700-1) | 660-1¾ 625 (700-1¾) | NA |
| CIRCLING | 660-1 624 (700-1) | 720-1 684 (700-1) | 720-2 684 (700-2) | NA |