

WAAS CH <b>62812</b> <b>W17A</b>	APP CRS <b>170°</b>	Rwy Idg <b>4400</b> TDZE <b>769</b> Apt Elev <b>769</b>
--	------------------------	---

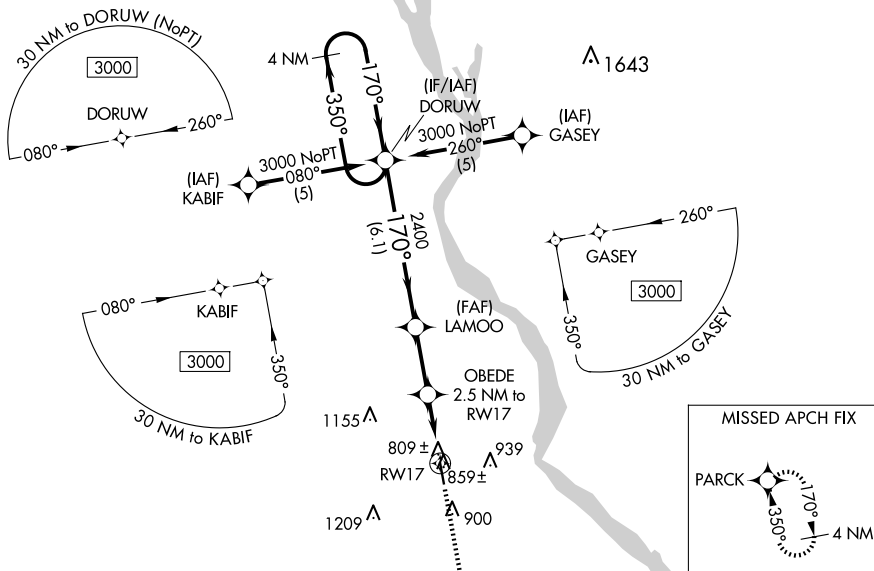
RNAV (GPS) RWY 17  
HANNIBAL RGNL (HAE)

**▼** For uncompensated Baro-VNAV systems, LNAV/VNAV NA below -16°C (4°F) or above 54°C (130°F), DME/DME RNP-0.3 NA. Visibility reduction by helicopters NA. When local altimeter setting not received, use Quincy altimeter setting; increase all DA 41 feet, all MDA 60 feet, increase LNAV Cat C visibility ¼ SM and Circling Cat C visibility ¼ SM.

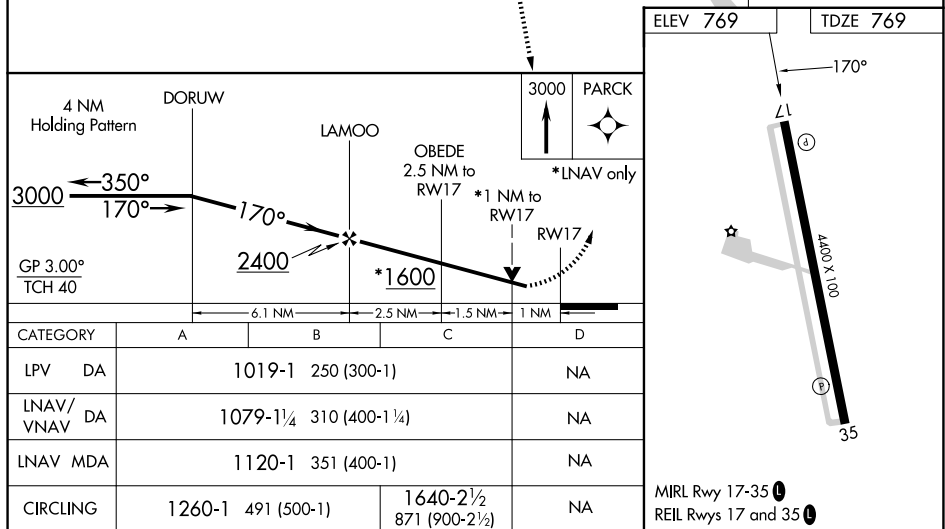
**▲** **NA** Baro-VNAV and VDP NA when using Quincy altimeter setting.

MISSED APPROACH: Climb to 3000  
direct PARCK and hold.

AWOS-3PT <b>120.775</b>	KANSAS CITY CENTER <b>126.225 317.775</b>	UNICOM <b>122.8 (CTAF) 0</b>
----------------------------	--	---------------------------------



MISSED APCH FIX



HANNIBAL, MISSOURI

Orig-A 25MAR21

39°44'N-91°27' W

HANNIBAL RGNI (HAE)

RNAV (GPS) RWY 17

NC-3, 07 AUG 2025 to 04 SEP 2025

NC-3, 07 AUG 2025 to 04 SEP 2025