

WAAS CH 93707 W13A	APP CRS 130°	Rwy Idg TDZE 2503 Apt Elev 2503
--	------------------------	---

RNAV (GPS) RWY 13

COZAD MUNI (CZD)

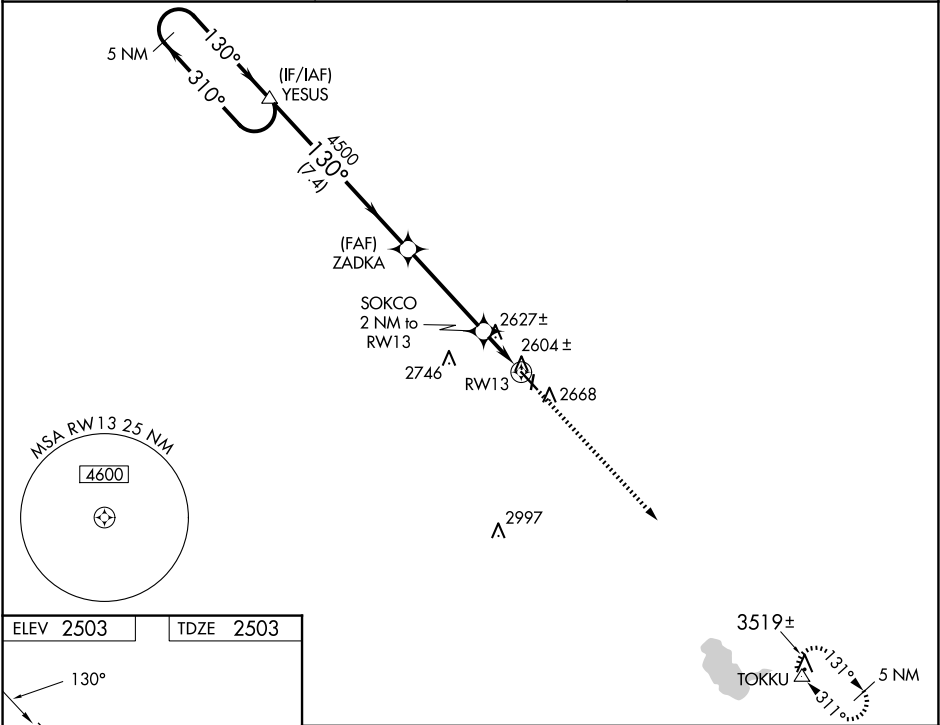
⚠

NA

Circling NA to Rwy's 18 and 36. Baro-VNAV NA. DME/DME RNP-0.3 NA.
Use Lexington altimeter setting; when not received, use North Platte altimeter setting and increase all DAs 79 feet and LPV and LNAV/VNAV visibility ¼ mile all Cats, increase all MDAs 80 feet and Circling Cat C visibility ¼ mile. Helicopter visibility reduction below ¾ SM NA.

MISSED APPROACH: Climb to 5500 direct TOKKU and hold.

LXN AWOS-3 121.025	DENVER CENTER 132.7 226.675	UNICOM 122.8 (CTAF) 0
------------------------------	---------------------------------------	---------------------------------



ELEV 2503

TDZE 2503

MIRL Rwy 13-31 0

5 NM Holding Pattern YESUS					5500 TOKKU	
5000 ← 310° → 130° → 4500					*LNAV only.	
GP 3.00° TCH 52					RW13	
7.4 NM 4 NM 2 NM						
CATEGORY	A		B		C	D
LPV DA	2875-1¼		372 (400-1¼)			NA
LNAV/VNAV DA	2913-1½		410 (500-1½)			NA
LNAV MDA	2920-1		417 (500-1)		2920-1¼ 417 (500-1¼)	NA
CIRCLING	3080-1		577 (600-1)		3140-1¾ 637 (700-1¾)	NA

NC-2, 07 AUG 2025 to 04 SEP 2025

NC-2, 07 AUG 2025 to 04 SEP 2025