

WAAS CH <b>42638</b> <b>W09A</b>	APP CRS <b>093°</b>	Rwy Idg <b>4201</b> TDZE <b>708</b> Apt Elev <b>708</b>
--	------------------------	---

RNAV (GPS) RWY 9

ARENS FLD (RWN)

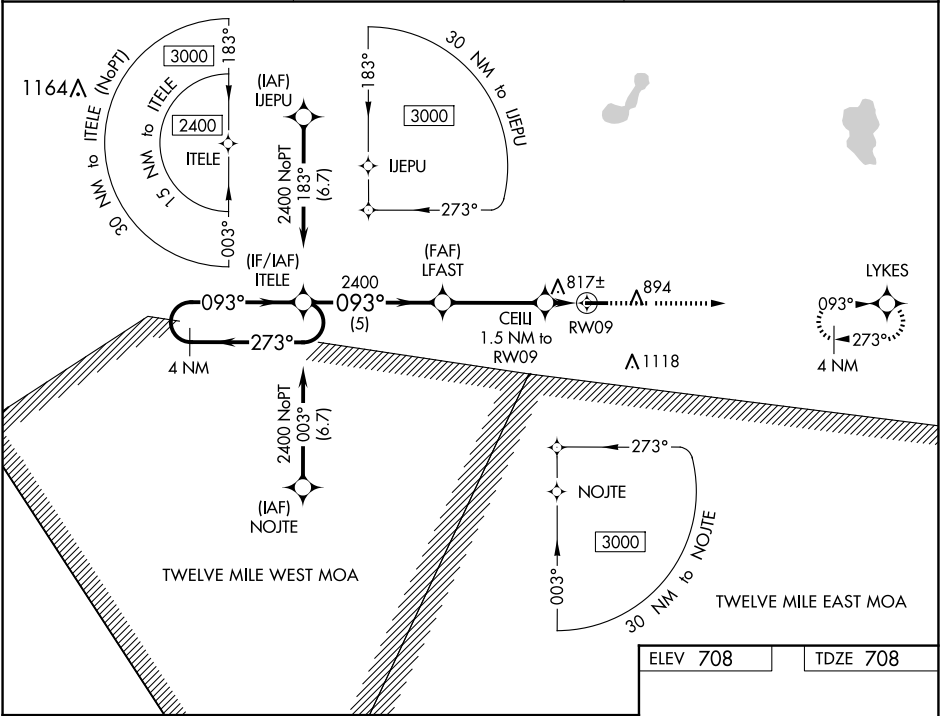
▼

NA

Baro-VNAV NA. Use Knox altimeter setting; when not received, use Rochester altimeter setting and increase all DA/MDA 20 feet and LNAV Cat C visibility 1⁄8 mile.  
DME/DME RNP-0.3 NA. Helicopter visibility reduction below 3⁄4 SM NA.

MISSED APPROACH: Climb to 2400 direct LYKES and hold.

OXI AWOS-3 <b>135.775</b>	SOUTH BEND APP CON ★ <b>132.05 257.8</b>	UNICOM <b>122.8 (CTAF) 0</b>
------------------------------	---	---------------------------------



4 NM Holding Pattern

ITELE

VGSI and RNAV glidepath not coincident (VGSI Angle 3.00/TCH 25).

2400 LYKES

GP 3.00° TCH 45

2400

2400

2400

CELI 1.5 NM to RW09

1220\*

5 NM

3.7 NM

1.5 NM

\*LNAV only.

CATEGORY	A	B	C	D
LPV DA	995-1 287 (300-1)			NA
LNAV/VNAV DA	1132-1½ 424 (500-1½)			NA
LNAV MDA	1120-1 412 (500-1)	1120-1⅛ 412 (500-1⅛)		NA
CIRCLING	1240-1 532 (600-1)	1480-2¼ 772 (800-2¼)		NA

ELEV 708 TDZE 708

093°

4201 X 75

27

MIRL Rwy 9-27 0  
REIL Rws 9 and 27 0