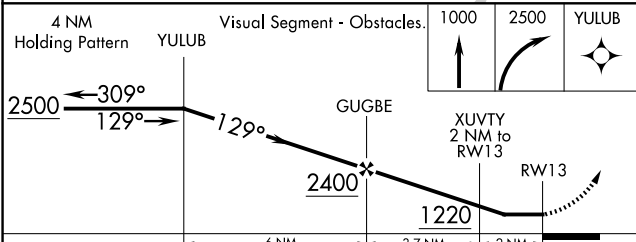
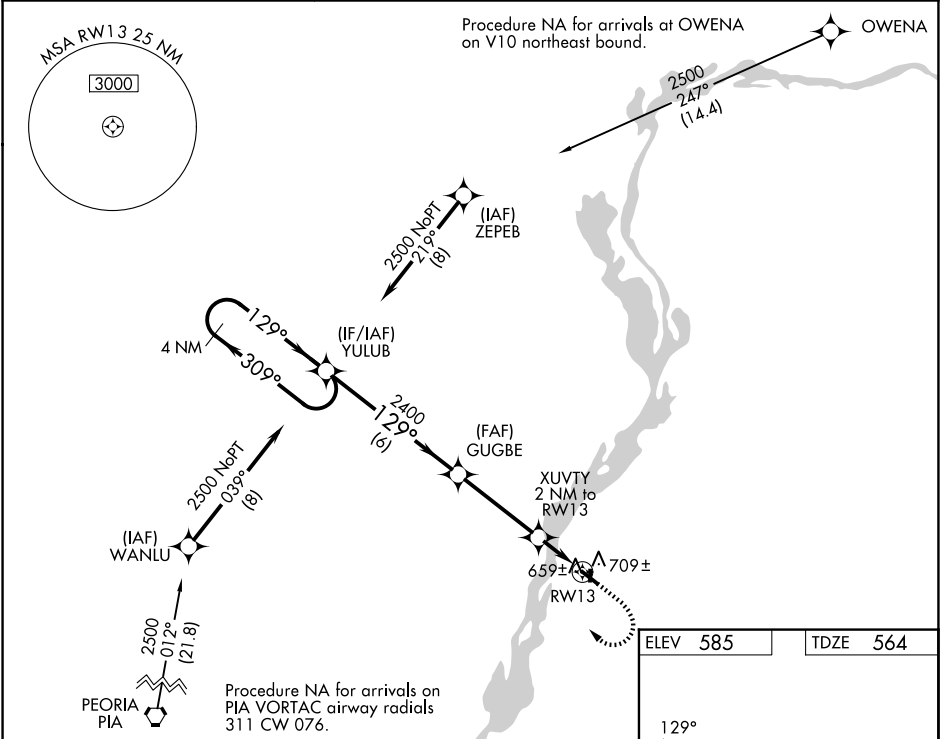


WAAS CH 66035 W13A	APP CRS 129°	Rwy Ldg 4003 TDZE 564 Apt Elev 585
--	------------------------	---

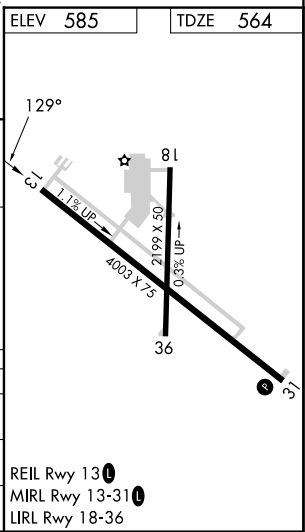
RNAV (GPS) RWY 13
MARSHALL COUNTY (C75)

<p>⚠ DME/DME RNP-0.3 NA. Helicopter visibility reduction below ¾ SM NA. When local altimeter setting not received, use Peru altimeter setting and increase all MDA 80 feet and increase LP and Circling Cat C visibilities ¼ mile and LNAV Cat C visibility ½ mile. Night landing: Rwy 18, 31, 36 NA.</p>	<p>MISSED APPROACH: Climb to 1000 then climbing right turn to 2500 direct YULUB and hold.</p>
--	---

AWOS-3 119.425	CHICAGO CENTER 124.55 307.125	UNICOM 122.8 (CTAF) 0
--------------------------	---	---------------------------------



CATEGORY	A	B	C	D
LP MDA	920-1	356 (400-1)	920-1 1/8 356 (400-1 1/8)	NA
LNAV MDA	960-1	396 (400-1)	960-1 1/4 396 (400-1 1/4)	NA
CIRCLING	1100-1	515 (600-1)	1200-1 3/4 615 (700-1 3/4)	NA



EC-3, 07 AUG 2025 to 04 SEP 2025

EC-3, 07 AUG 2025 to 04 SEP 2025