

HAILEY, IDAHO

AL-6239 (FAA)

25163

NDB/DME HLE <u>220</u> Chan 25 (108.8)	APP CRS 335°	Rwy Ldg TDZE Apt Elev 5320	N/A N/A
--	------------------------	---	--------------------------

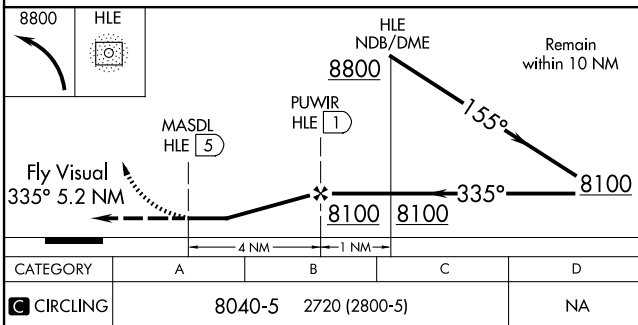
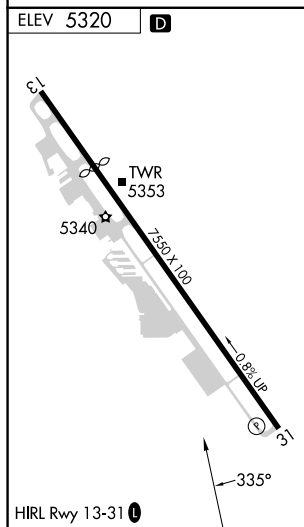
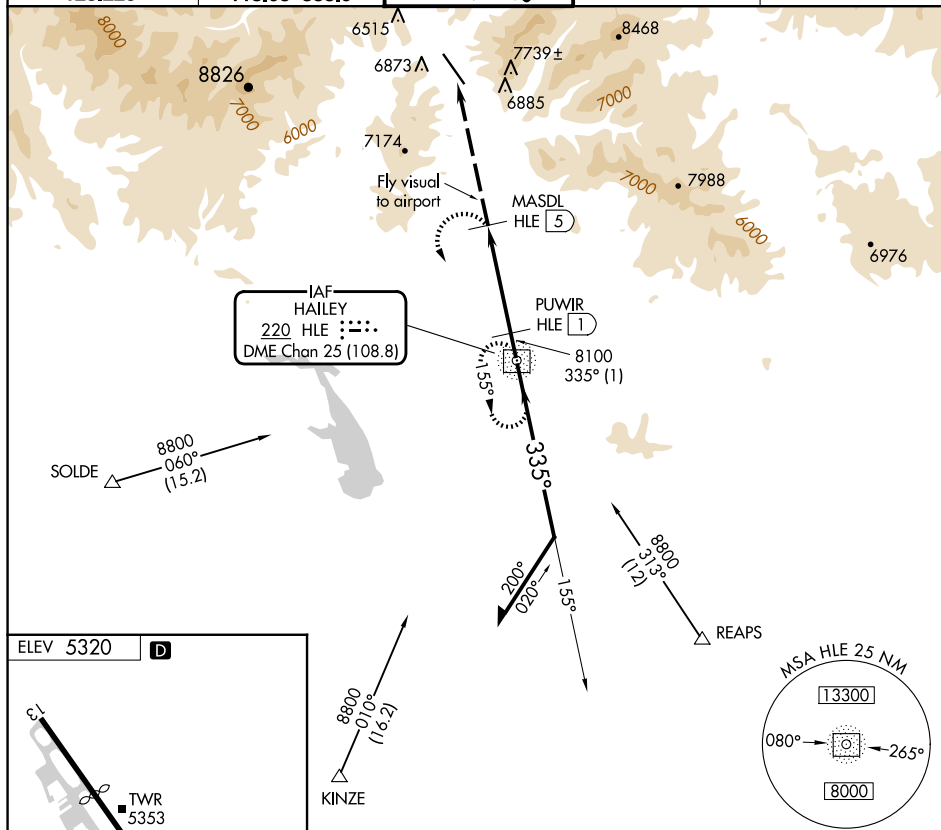
NDB/DME-A
FRIEDMAN MEML (SUN)


 NA
 -13°C

Circling NA NE of Rwy 13-31. Visibility reduction by helicopters NA. When control tower closed, procedure not authorized. Occasional ADF needle swings away from the final approach course are to be expected north of missed approach point. Procedure NA at night.

MISSED APPROACH: Climbing left turn to 8800 direct HLE NDB and hold.

ATIS 128.225	SALT LAKE CENTER 118.05 353.0	HAILEY TOWER★ 125.6 (CTAF) 0	GND CON 121.7	UNICOM 122.95
-----------------	----------------------------------	---------------------------------	------------------	------------------



HAILEY, IDAHO
Amdt 1 06FEB14

43°30'N-114°18'W

FRIEDMAN MEML (SUN)
NDB/DME-A

NW-1, 07 AUG 2025 to 04 SEP 2025

NW-1, 07 AUG 2025 to 04 SEP 2025