

WAAS CH <b>42607</b> <b>W36A</b>	APP CRS <b>004°</b>	Rwy Idg TDZE Apt Elev	<b>5003</b> <b>36</b> <b>39</b>
--	------------------------	-----------------------------	---------------------------------------

RNAV (GPS) RWY 36  
FALSE RIVER RGNL (HZR)

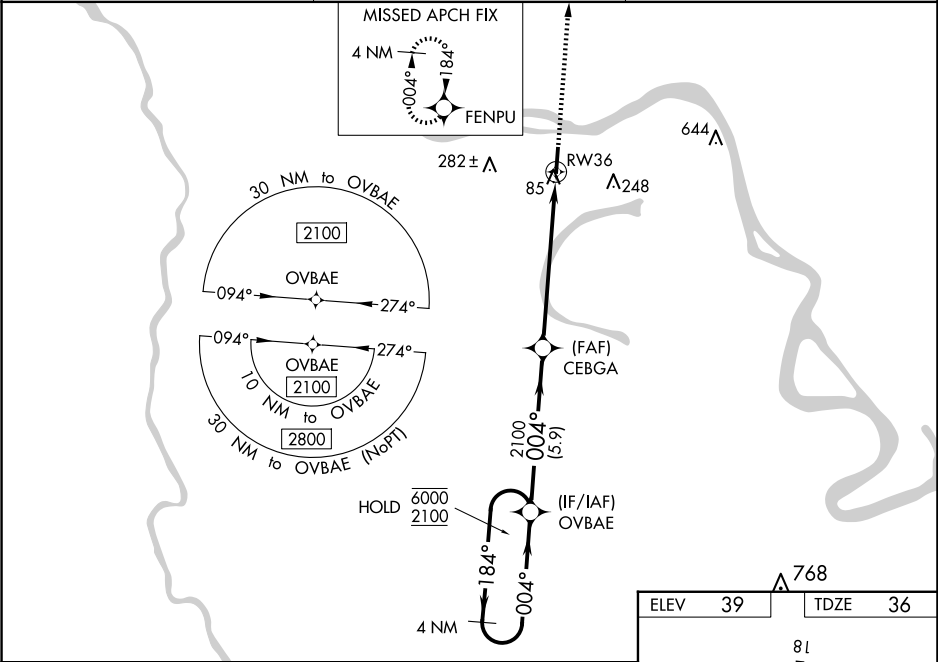
RNP APCH.

For uncompensated Baro-VNAV systems, LNAV/VNAV NA below -15°C or above 54°C. Baro-VNAV and VDP NA when using Baton Rouge altimeter setting. When local altimeter setting not received, use Baton Rouge altimeter setting and increase all DA 51 feet and all visibility 1/8 SM; increase all MDA 60 feet, and LNAV Cat C/D visibility 1/8 SM and Circling Cat C visibility 1/4 SM. For inop ALS when using Baton Rouge altimeter setting, increase LNAV/VNAV visibility to 1 SM and LNAV Cat C/D visibility to 1 1/8 SM.

ODALS

MISSED APPROACH: Climb to 2300 direct FENPU and hold.

AWOS-3PT <b>121.250</b>	BATON ROUGE APP CON★ <b>120.3 278.3</b>	UNICOM <b>122.8 (CTAF) 0</b>
----------------------------	--	---------------------------------



4 NM Holding Pattern

6000 ← 184°

2100 → 004°

GP 3.00°

TCH 50

OVBAE

CEBGA 2100

2100

5.9 NM

4.9 NM

1.4 NM

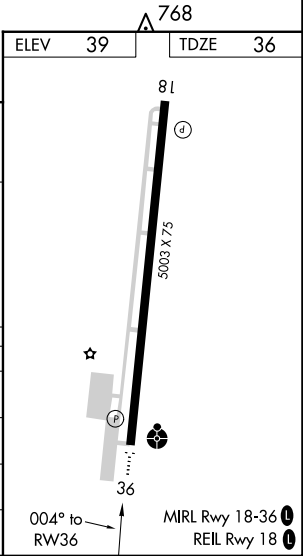
RW36

\*LNAV only.

2300 FENPU

\*1.4 NM to RW36

CATEGORY	A	B	C	D
LPV DA		286-3/4	250 (300-3/4)	
LNAV/VNAV DA		307-3/4	271 (300-3/4)	
LNAV MDA	520-3/4 484 (500-3/4)	520-1 484 (500-1)	520-1 1/4 484 (500-1 1/4)	484 (500-1 1/4)
CIRCLING	520-1 481 (600-1)		600-1 1/2 561 (600-1 1/2)	600-2 561 (600-2)



SC-4, 07 AUG 2025 to 04 SEP 2025

SC-4, 07 AUG 2025 to 04 SEP 2025