

▼

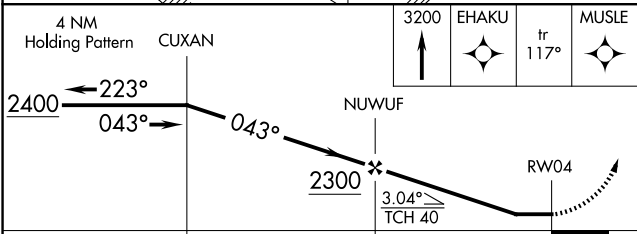
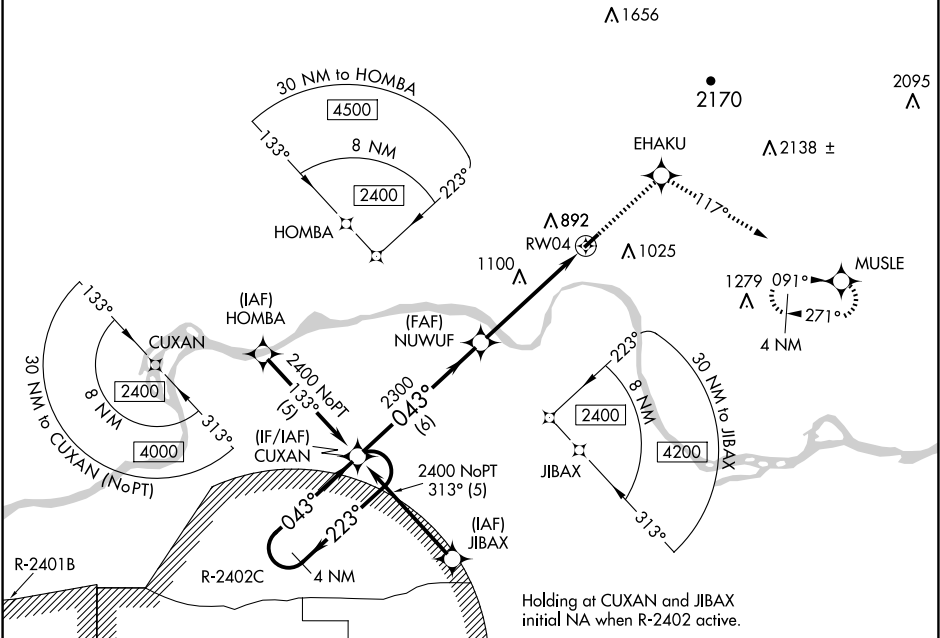
NA

DME/DME RNP-0.3 NA. Visibility reduction by helicopters NA. Use Fort Smith altimeter setting; when not received, use Drake Fld altimeter setting and increase all MDAs 80 feet; increase LNAV Cat A/C and Circling Cat C visibility ¼ SM.

MISSED APPROACH: Climb to 3200 direct EHAKU and on track 117° to MUSLE and hold.

RAZORBACK APP CON ★
120.9 343.75

UNICOM
122.8 (CTAF) 0



CATEGORY	A	B	C	D
LNAV MDA	1480-1 832 (900-1)	1480-1¼ 832 (900-1¼)	1480-2½ 832 (900-2½)	NA
CIRCLING	1480-1¼ 832 (900-1¼)		1500-2½ 852 (900-2½)	NA

