

LOC/DME I-AAO <b>109.55</b> Chan <b>32</b> (Y)	APP CRS <b>181°</b>	Rwy Idg TDZE Apt Elev <b>6101</b> <b>1414</b> <b>1421</b>
--	------------------------	--

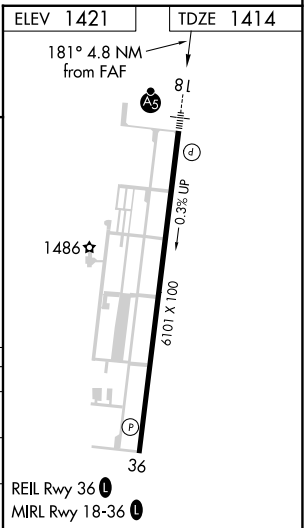
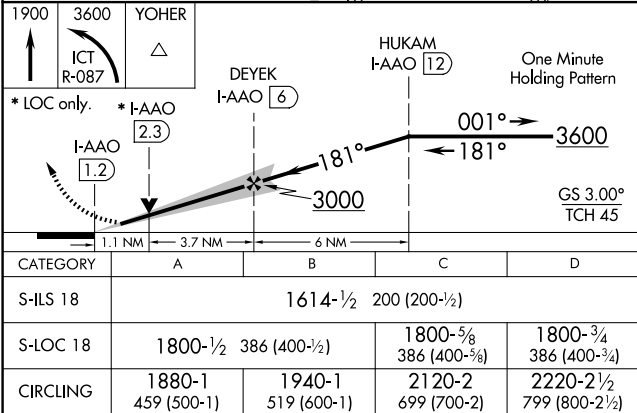
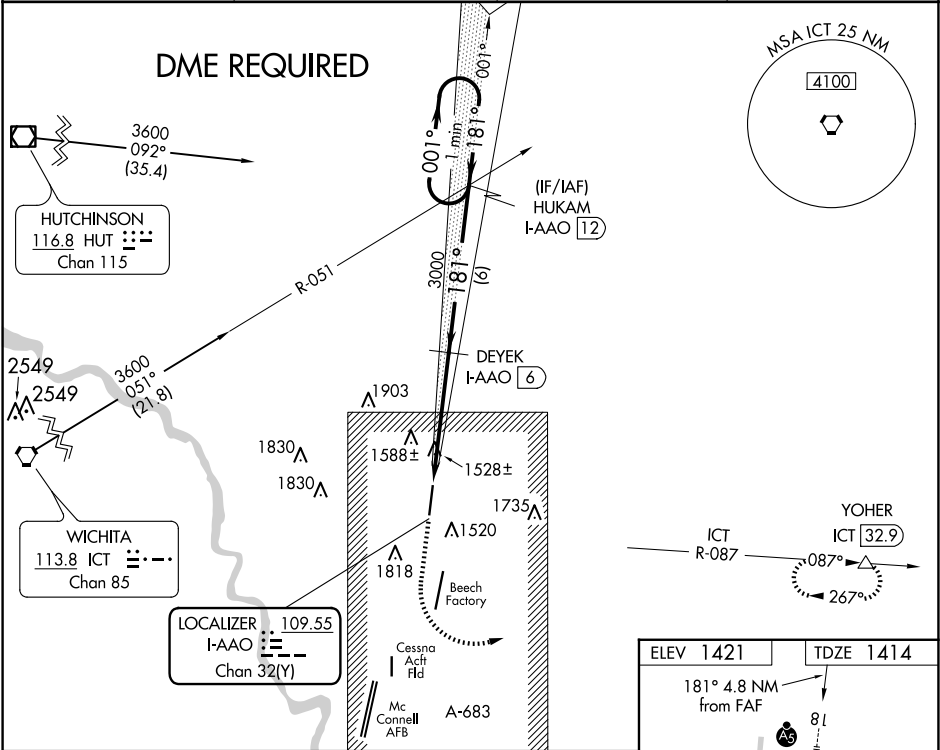
ILS or LOC RWY 18  
COLONEL JAMES JABARA (AAO)

DME required.

MALSR

MISSED APPROACH: Climb to 1900 then climbing left turn to 3600 on ICT VORTAC R-087 to YOHER/ICT 32.9 DME and hold.

ASOS <b>134.025</b>	WICHITA APP CON <b>134.8 269.1</b>	CLNC DEL <b>125.0</b>	UNICOM <b>122.7</b> (CTAF) <b>1</b>
------------------------	---------------------------------------	--------------------------	--



NC-2, 07 AUG 2025 to 04 SEP 2025

NC-2, 07 AUG 2025 to 04 SEP 2025