

WAAS CH <b>99317</b> <b>W34A</b>	APP CRS <b>340°</b>	Rwy Idg <b>5000</b> TDZE <b>1257</b> Apt Elev <b>1266</b>
--	------------------------	---

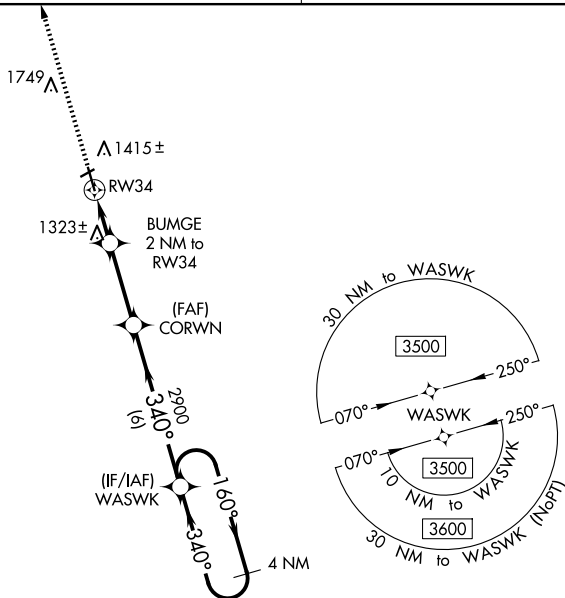
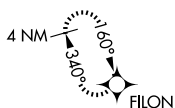
RNAV (GPS) RWY 34  
GWINNER/ROGER MELROE FLD (GWR)

**⚠** Circling NA to Rwys 6 and 24. For uncompensated Baro-VNAV systems, LNAV/VNAV NA below -17°C (2°F) or above 54°C (130°F). DME/DME RNP-0.3 NA. When local altimeter setting not received use Fargo altimeter setting: increase all DA to 1683 feet and all visibilities ½ SM; increase all MDAs 180 feet and visibility LNAV Cat C/D ½ SM, and Circling Cat C ½ SM, and Circling Cat D ½ SM. Baro-VNAV and VDP NA when using Fargo altimeter setting.

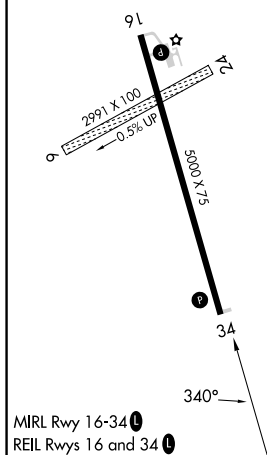
**MISSED APPROACH:**  
Climb to 3500 direct  
FILON and hold.

AWOS-3 <b>118.325</b>	MINNEAPOLIS CENTER <b>127.35 278.3</b>	UNICOM <b>122.7 (CTAF) 0</b>
--------------------------	---	---------------------------------

MISSED APCH FIX



ELEV	1266		TDZE	1257
------	------	--	------	------



		VGS1 and RNAV glidepath not coincident (VGS1 Angle 3.00/TCH 25).	
*RNAV only.		WASWK 4 NM Holding Pattern	
BUMGE 2 NM to RW34		CORWN 2900	
*0.9 NM to RW34		340°	
RW34		160° → 3500 ← 340°	
0.9 NM		GP 3.00° TCH 40	
1.1 NM		3 NM	
6 NM		2900	
CATEGORY	A	B	C
LPV DA		1507-1	250 (300-1)
RNAV/ VNAV DA		1507-1	250 (300-1)
RNAV MDA		1580-1	323 (400-1)
<b>C</b> CIRCLING	1780-1	514 (600-1)	1840-1½ 574 (600-1½)
			2060-2½ 794 (800-2½)