

APP CRS
275°

Rwy Idg
TDZE
3199
919
Apt Elev
920

RNAV (GPS) RWY 27

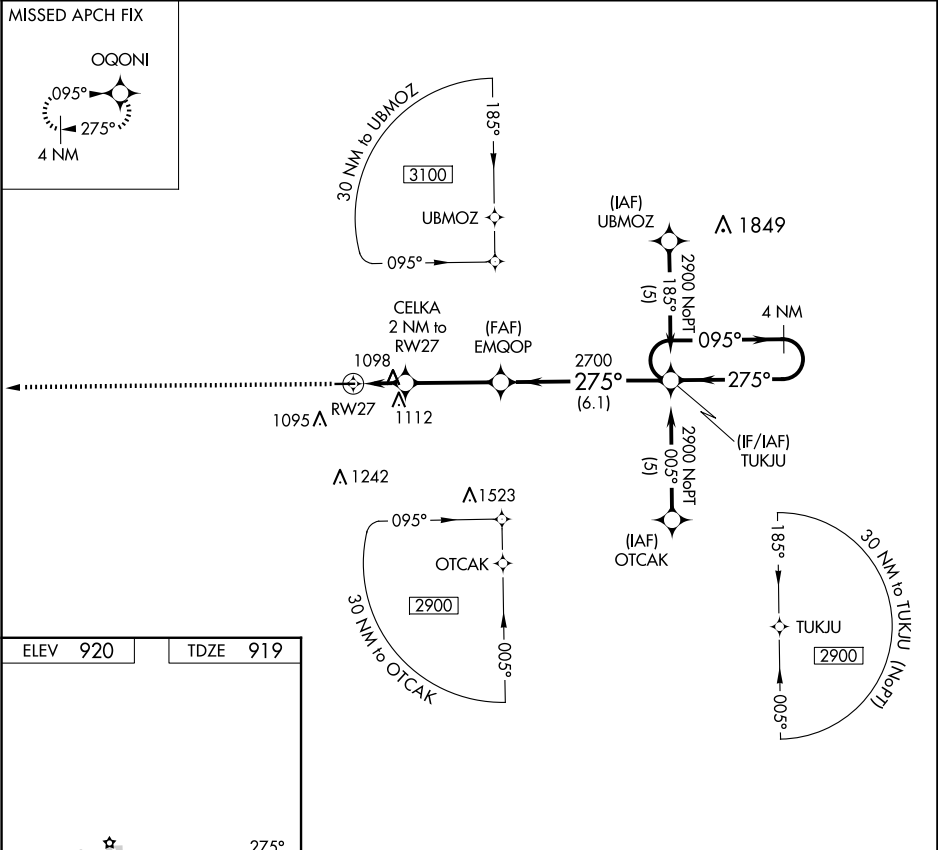
PRICES (9G2)

RNP APCH.

Use Flint altimeter setting; when not received, use Howell altimeter setting.
NA Procedure NA at night. Rwy 27 helicopter visibility reduction below 1 SM NA.

MISSED APPROACH: Climb to 3100 direct OQONI and hold.

FNT ASOS 133.15	GREAT LAKES APP CON ★ 128.55 257.9	UNICOM 123.0 (CTAF) 0
--------------------	---------------------------------------	--------------------------



ELEV 920

TDZE 919

3100 OQONI

CELKA 2 NM to RW27

EMQOP

TUKJU 4 NM Holding Pattern

2700

1580

2900

2 NM

3.4 NM

6.1 NM

CATEGORY	A	B	C	D
LNAV MDA	1400-1 481 (500-1)			NA

REIL Rwy 9 0
MIRL Rwy 9-27 0

EC-1, 07 AUG 2025 to 04 SEP 2025

EC-1, 07 AUG 2025 to 04 SEP 2025