

LURAY, VIRGINIA

AL-6229 (FAA)

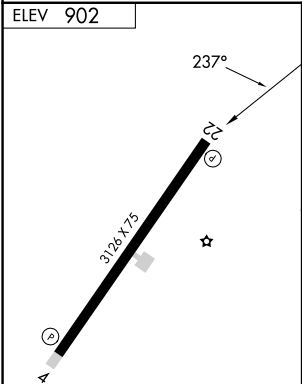
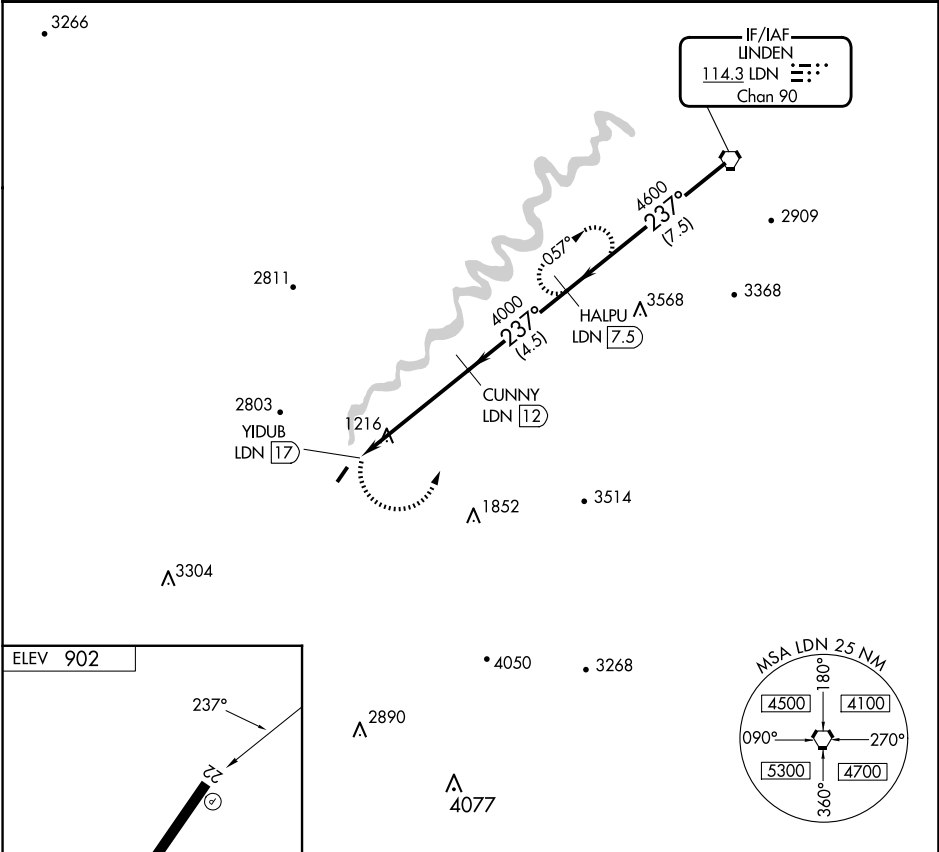
24081

| | | | |
|------------|---------|----------|-----|
| VORTAC LDN | APP CRS | Rwy Idg | N/A |
| 114.3 | 237° | TDZE | N/A |
| Chan 90 | | Apt Elev | 902 |

VOR/DME-B
LURAY CAVERNS (LUA)

| | | |
|--|--|--|
| | Visibility reduction by helicopters NA. When local altimeter setting not received, use Staunton/Waynesboro/Harrisburg altimeter setting and increase all MDA 120 feet. | MISSED APPROACH: Climbing left turn to 4900 on LDN VORTAC R-237 to HALPU/LDN 7.5 DME and hold, continue climb-in-hold to 4900. |
|--|--|--|

| | | |
|-------------------|----------------------------------|--------------------------|
| AWOS-3 118.275 | WASHINGTON CENTER 133.2 282.2 | UNICOM 122.8 (CTAF) 0 |
|-------------------|----------------------------------|--------------------------|



REIL Rwy 4 and 22 0
MIRL Rwy 4-22 0

| | | | | |
|-----------|---------------------------|---------------------------|---------------|------------|
| 4900 | HALPU LDN 7.5 | CUNNY LDN 12 | HALPU LDN 7.5 | LDN VORTAC |
| LDN R-237 | | | | |
| | YIDUB LDN 17 | 4000 | 4600 | 4600 |
| | 5.0 NM | 4.5 NM | 7.5 NM | |
| CATEGORY | A | B | C | D |
| CIRCLING | 2200-1¼ 1298 (1300-1¼) | 2200-1½ 1298 (1300-1½) | NA | NA |

LURAY, VIRGINIA
Amdt 3B 25MAR21

38°40'N-78°30'W

LURAY CAVERNS (LUA)
VOR/DME-B

NE-3, 07 AUG 2025 to 04 SEP 2025

NE-3, 07 AUG 2025 to 04 SEP 2025