

LURAY, VIRGINIA

AL-6229 (FAA)

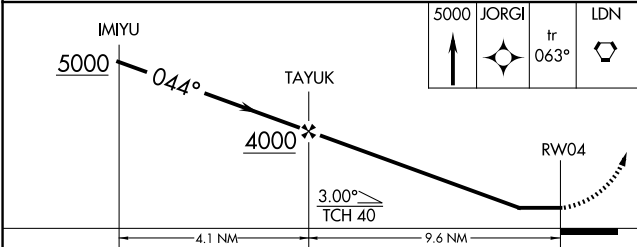
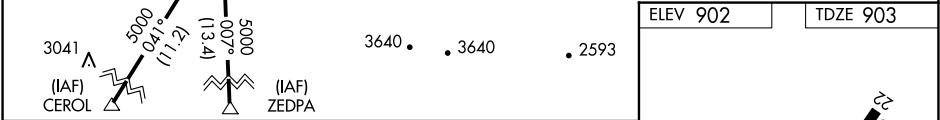
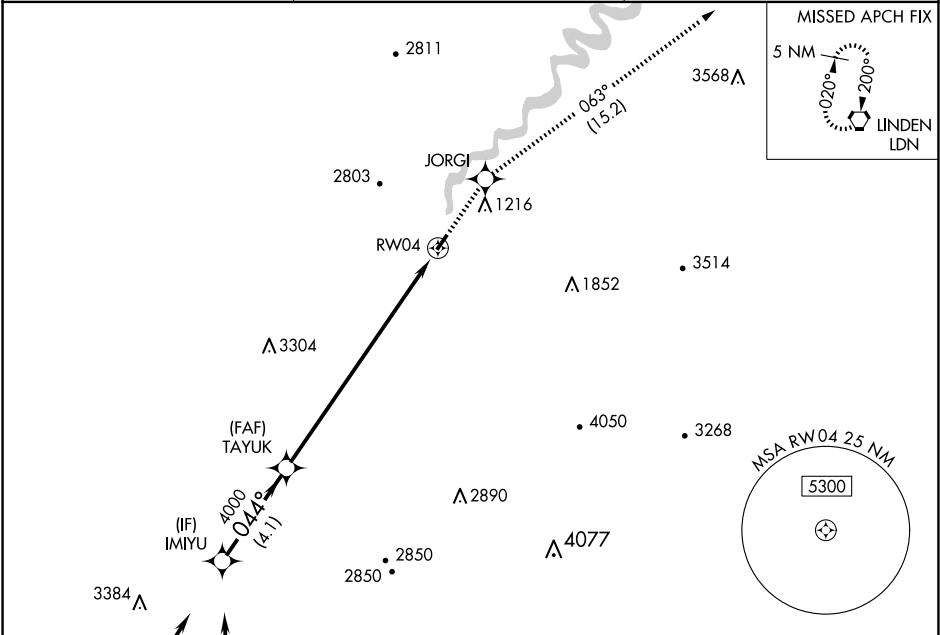
25051

WAAS CH <b>65727</b> <b>W04A</b>	APP CRS <b>044°</b>	Rwy Idg TDZE <b>903</b> Apt Elev <b>902</b>	<b>3126</b>
--	------------------------	---	-------------

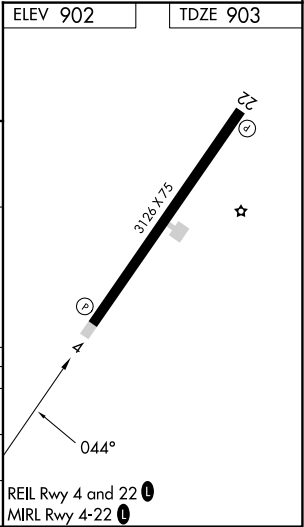
RNAV (GPS) RWY 4  
LURAY CAVERNS (LUA)

<p><b>▽</b> <b>▲</b></p> <p>DME/DME RNP-0.3 NA. Helicopter visibility reduction below ¾ SM NA. When local altimeter setting not received, use Staunton/Waynesboro/Harrisonburg altimeter setting and increase all MDA 120 feet.</p>	<p>MISSED APPROACH: Climb to 5000 direct JORGI and on track 063° to LDN VORTAC and hold.</p>
---	--

AWOS-3 <b>118.275</b>	WASHINGTON CENTER <b>133.2 282.2</b>	UNICOM <b>122.8 (CTAF) 0</b>
--------------------------	---	---------------------------------



CATEGORY	A	B	C	D
LP MDA	2180-1¼ 1277 (1300-1¼)	2180-1½ 1277 (1300-1½)	NA	NA
LNAV MDA	2240-1¼ 1337 (1400-1¼)	2240-1½ 1337 (1400-1½)	NA	NA
CIRCLING	2240-1¼ 1338 (1400-1¼)	2240-1½ 1338 (1400-1½)	NA	NA



LURAY, VIRGINIA  
Orig-C 25MAR21

38°40'N-78°30'W

LURAY CAVERNS (LUA)  
RNAV (GPS) RWY 4

NE-3, 07 AUG 2025 to 04 SEP 2025

NE-3, 07 AUG 2025 to 04 SEP 2025