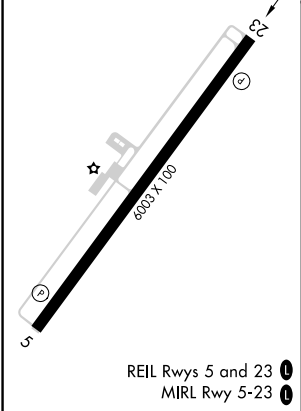
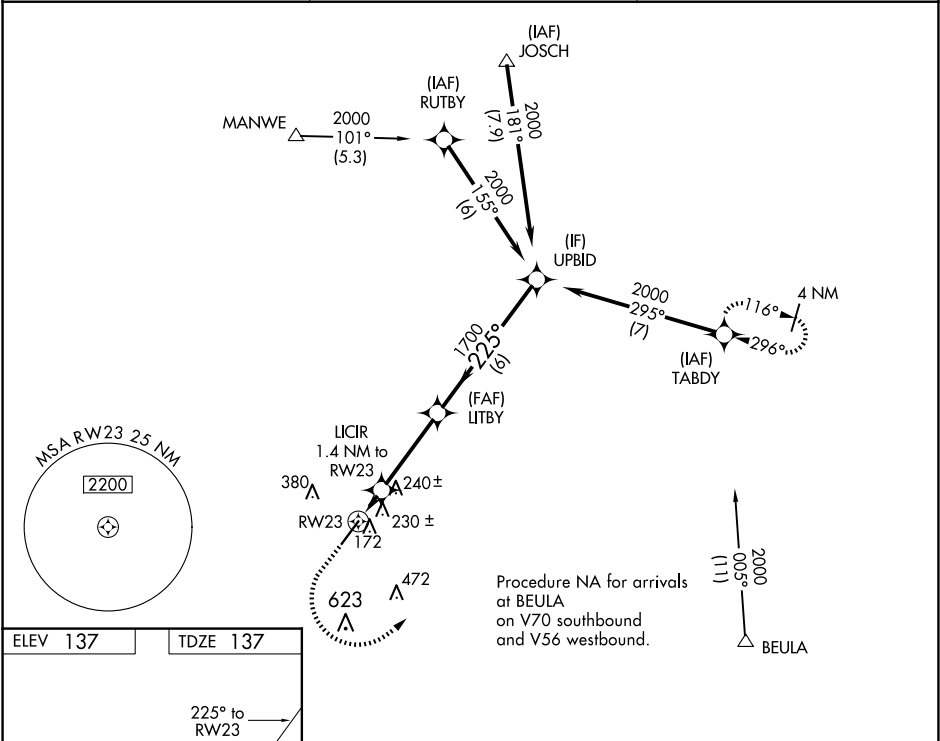


WAAS CH <b>69521</b> <b>W23A</b>	APP CRS <b>225°</b>	Rwy Idg TDZE Apt Elev <b>137</b>	<b>6003</b> <b>137</b> <b>137</b>
--	------------------------	--	---

RNAV (GPS) RWY 23

DUPLIN COUNTY (DPL)

RNP APCH. For uncompensated Baro-VNAV systems, LNAV/VNAV NA below -15°C or above 54°C.		MISSED APPROACH: Climb to 1000 then climbing left turn to 2000 direct TABDY and hold.
AWOS-3 <b>120.675</b>	SEYMOUR JOHNSON APP CON★ <b>119.7 273.6</b>	UNICOM <b>123.0 (CTAF) 0</b>



1000	2000	TABDY				
------	------	-------	--	--	--	--