

APP CRS <b>304°</b>	Rwy Ldg TDZE Apt Elev	<b>4600</b> <b>3063</b> <b>3071</b>
------------------------	-----------------------------	---

RNAV (GPS) RWY 30  
ULYSSES (ULS)

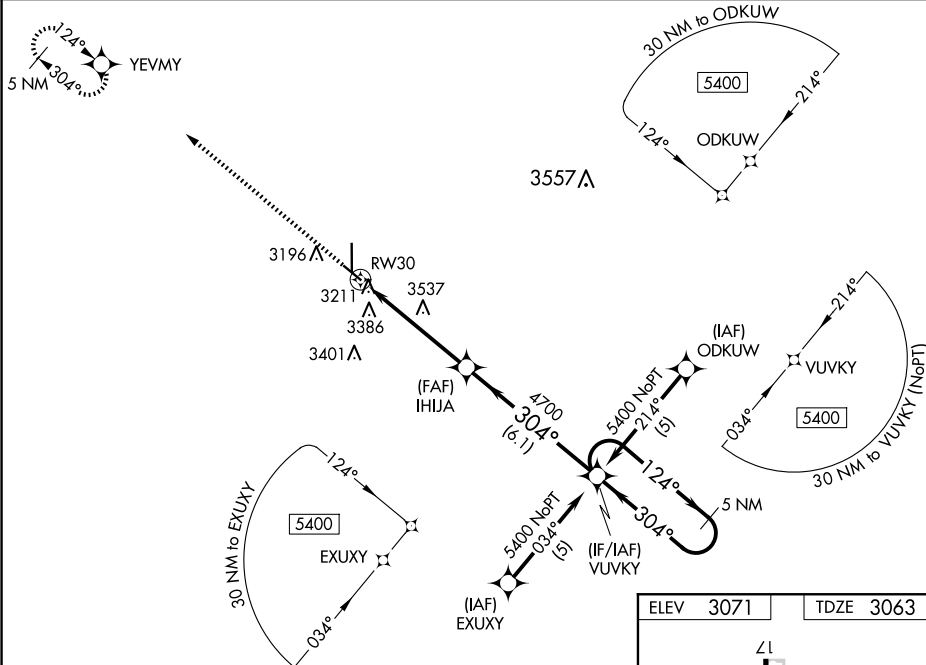
RNP APCH-GPS.

**T** Rwy 30 helicopter visibility reduction below  $\frac{3}{4}$  SM NA. VDP NA when using  
**A** Garden City altimeter setting. When local altimeter setting not received, use  
 Garden City altimeter setting and increase all MDAs 120 feet and increase  
 visibility Cat A  $\frac{1}{4}$  SM and Circling Cat C  $\frac{1}{4}$  SM.

**MISSED APPROACH:** Climb to 5400  
direct YEVMY and hold.

AWOS-3PT  
**118.95**

KANSAS CITY CENTER  
125.2 285.425

UNICOM  
122.8 (CTAF) **L**

5400

YFVMY

VGSI and descent angle not coincident  
(VGSI Angle 3.00/TCH 39).

VUVKY

5 NM  
Holding Pattern

2.3 NM to

--	--	--

	1980	1985	1990	1995	2000	2005	2010	2015	2020
Population	76.0	80.0	84.0	88.0	92.0	96.0	100.0	104.0	108.0
GDP	100.0	110.0	120.0	130.0	140.0	150.0	160.0	170.0	180.0
Government expenditure	100.0	105.0	110.0	115.0	120.0	125.0	130.0	135.0	140.0
Private consumption	100.0	105.0	110.0	115.0	120.0	125.0	130.0	135.0	140.0
Investment	100.0	105.0	110.0	115.0	120.0	125.0	130.0	135.0	140.0
Savings	100.0	105.0	110.0	115.0	120.0	125.0	130.0	135.0	140.0
Exports	100.0	105.0	110.0	115.0	120.0	125.0	130.0	135.0	140.0
Imports	100.0	105.0	110.0	115.0	120.0	125.0	130.0	135.0	140.0
Fiscal balance	100.0	105.0	110.0	115.0	120.0	125.0	130.0	135.0	140.0
Current account balance	100.0	105.0	110.0	115.0	120.0	125.0	130.0	135.0	140.0
Capital account balance	100.0	105.0	110.0	115.0	120.0	125.0	130.0	135.0	140.0
Trade balance	100.0	105.0	110.0	115.0	120.0	125.0	130.0	135.0	140.0
Balance of payments	100.0	105.0	110.0	115.0	120.0	125.0	130.0	135.0	140.0
Net foreign debt	100.0	105.0	110.0	115.0	120.0	125.0	130.0	135.0	140.0
Net international reserves	100.0	105.0	110.0	115.0	120.0	125.0	130.0	135.0	140.0
Public debt	100.0	105.0	110.0	115.0	120.0	125.0	130.0	135.0	140.0
Private debt	100.0	105.0	110.0	115.0	120.0	125.0	130.0	135.0	140.0
Total debt	100.0	105.0	110.0	115.0	120.0	125.0	130.0	135.0	140.0
Net foreign assets	100.0	105.0	110.0	115.0	120.0	125.0	130.0	135.0	140.0
Net international liabilities	100.0	105.0	110.0	115.0	120.0	125.0	130.0	135.0	140.0
Net international position	100.0	105.0	110.0	115.0	120.0	125.0	130.0	135.0	140.0
Net international equity	100.0	105.0	110.0	115.0	120.0	125.0	130.0	135.0	140.0
Net international debt	100.0	105.0	110.0	115.0	120.0	125.0	130.0	135.0	140.0
Net international capital	100.0	105.0	110.0	115.0	120.0	125.0	130.0	135.0	140.0
Net international income	100.0	105.0	110.0	115.0	120.0	125.0	130.0	135.0	140.0
Net international investment	100.0	105.0	110.0	115.0	120.0	125.0	130.0	135.0	140.0
Net international savings	100.0	105.0	110.0	115.0	120.0	125.0	130.0	135.0	140.0
Net international consumption	100.0	105.0	110.0	115.0	120.0	125.0	130.0	135.0	140.0
Net international government expenditure	100.0	105.0	110.0	115.0	120.0	125.0	130.0	135.0	140.0
Net international private consumption	100.0	105.0	110.0	115.0	120.0	125.0	130.0	135.0	140.0
Net international investment	100.0	105.0	110.0	115.0	120.0	125.0	130.0	135.0	140.0
Net international savings	100.0	105.0	110.0	115.0	120.0	125.0	130.0	135.0	140.0
Net international consumption	100.0	105.0	110.0	115.0	120.0	125.0	130.0	135.0	140.0
Net international government expenditure	100.0	105.0	110.0	115.0	120.0	125.0	130.0	135.0	140.0
Net international private consumption	100.0	105.0	110.0	115.0	120.0	125.0	130.0	135.0	140.0
Net international investment	100.0	105.0	110.0	115.0	120.0	125.0	130.0	135.0	140.0
Net international savings	100.0	105.0	110.0	115.0	120.0	125.0	130.0	135.0	140.0
Net international consumption	100.0	105.0	110.0	115.0	120.0	125.0	130.0	135.0	140.0
Net international government expenditure	100.0	105.0	110.0	115.0	120.				

 $24^\circ \rightarrow$ 

5400

\_\_\_\_\_

---

4

---

10	8	20	15	20	20	15	15	10000	10
----	---	----	----	----	----	----	----	-------	----

3840-1

3840-1

3840-2 1/2

---

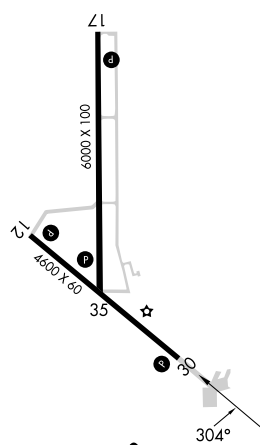
**Figure 1**

3840-1

3840-1

3900-2 1/4

---

REF Rwy 17 and 35 MIRI R<sub>WYS</sub> 12-30 and 17-35 