

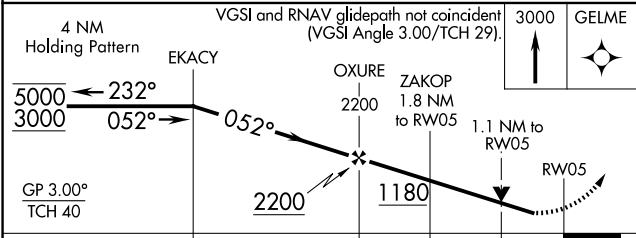
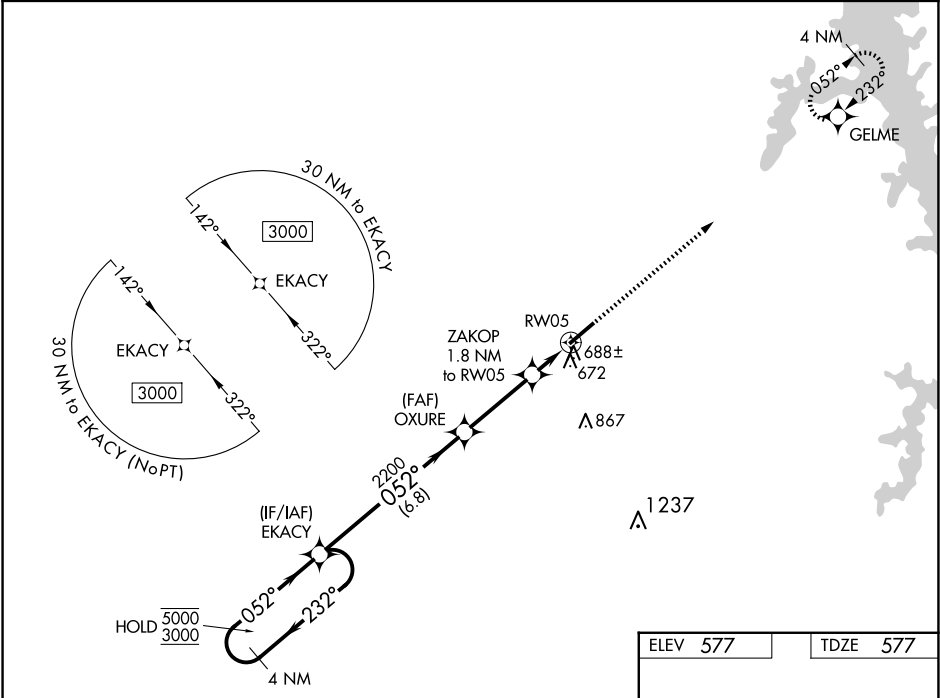
WAAS CH 86826 W05A	APP CRS 052°	Rwy Idg TDZE Apt Elev 577 577	6202
--	------------------------	---	-------------

RNAV (GPS) RWY 5

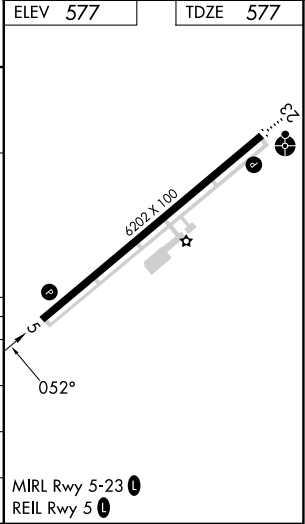
KYLE-OAKLEY FLD (CEY)

RNP APCH - GPS.	
<div><div></div><div>Rwy 5 helicopter visibility reduction below $\frac{3}{4}$ SM NA. For uncompensated Baro-VNAV systems, LNAV/VNAV NA below -16°C or above 54°C.</div></div>	MISSED APPROACH: Climb to 3000 direct GELME and hold.

AWOS-3 119.975	MEMPHIS CENTER 133.65 292.15	UNICOM 122.7 (CTAF)
--------------------------	--	-------------------------------



CATEGORY	A	B	C	D
LPV DA		827- $\frac{3}{4}$	250 (300- $\frac{3}{4}$)	
LNAV/VNAV DA		947-1	370 (400-1)	
LNAV MDA	960-1	383 (400-1)	960-1 $\frac{1}{8}$	383 (400-1 $\frac{1}{8}$)
<div><div></div><div>CIRCLING</div></div>	1000-1 423 (500-1)	1040-1 463 (500-1)	1040-1 $\frac{1}{2}$ 463 (500-1 $\frac{1}{2}$)	1180-2 603 (700-2)



SE-1, 07 AUG 2025 to 04 SEP 2025

SE-1, 07 AUG 2025 to 04 SEP 2025