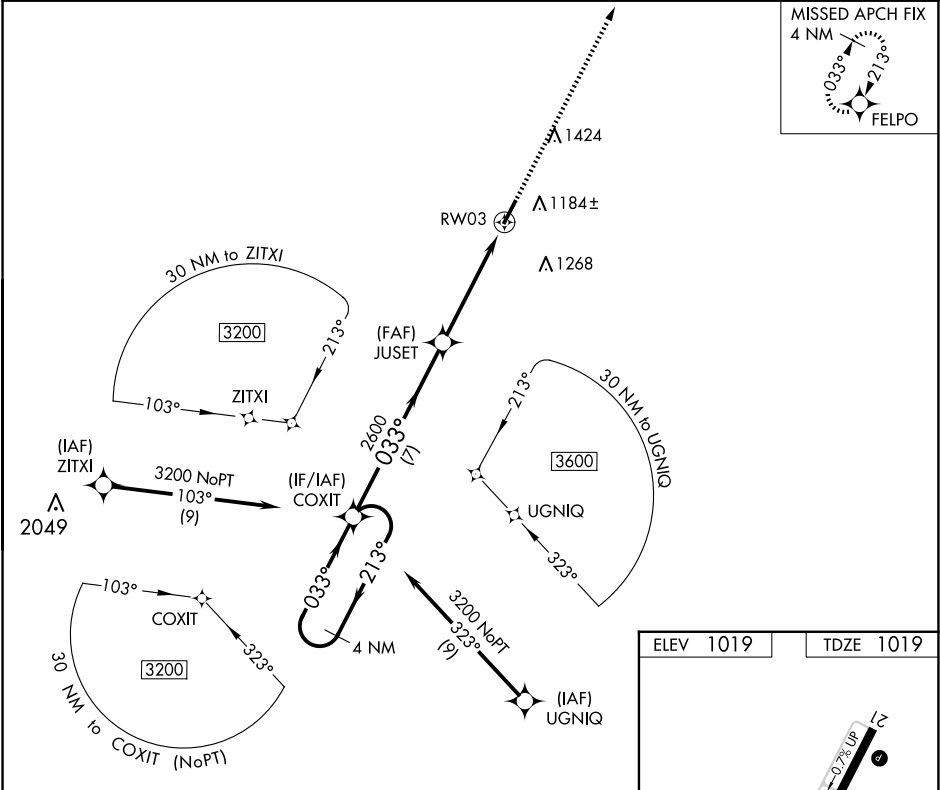


WAAS CH 81933 W03A	APP CRS 033°	Rwy Idg TDZE Apt Elev	5000 1019 1019
--	------------------------	-----------------------------	---

RNAV (GPS) RWY 3

MOUNT STERLING/MONTGOMERY COUNTY (IOB)

<div><div><div>▼</div><div>▲ NA</div></div><div>DME/DME RNP-0.3 NA. When local altimeter setting not received, use Lexington altimeter setting and increase all MDA 80 feet and all visibilities ¼ mile. Helicopter visibility reduction below ¾ SM NA.</div></div>			MISSED APPROACH: Climb to 3000 direct FELPO and hold.
AWOS-3 120.675	LEXINGTON APP CON 120.15 259.3	GCO 121.72	CTAF 122.8 0



4 NM Holding Pattern		Visual Segment - Obstacles.		3000	FELPO
CATEGORY	A	B	C	D	
LP MDA	1540-1	521 (600-1)	1540-1½	521 (600-1½)	
LNAV MDA	1560-1	541 (600-1)	1560-1⅝	541 (600-1⅝)	
◼ CIRCLING	1560-1	541 (600-1)	1740-2 721 (800-2)	1740-2¼ 721 (800-2¼)	