

WAAS CH <b>42830</b> <b>W21A</b>	APP CRS <b>213°</b>	Rwy Idg TDZE <b>1007</b> Apt Elev <b>1019</b>	<b>5000</b> <b>1007</b> <b>1019</b>
--	------------------------	---	---

RNAV (GPS) RWY 21

MOUNT STERLING/MONTGOMERY COUNTY (IOB)

RNP APCH - GPS

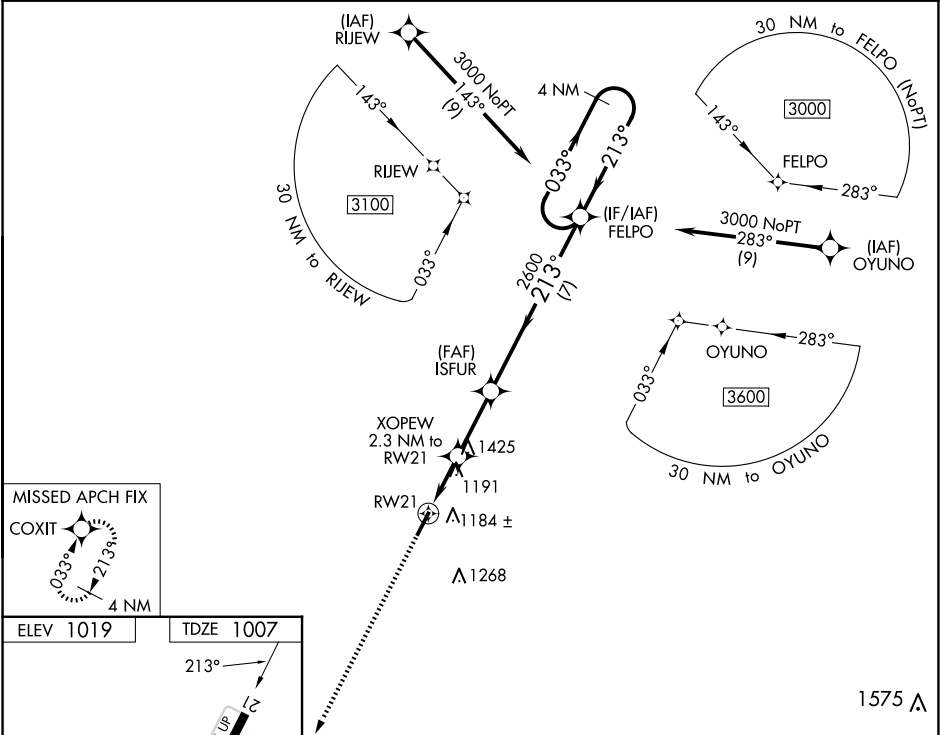
▼

NA

For uncompensated Baro-VNAV systems, LNAV/VNAV NA below -17°C or above 54°C. When local altimeter setting not received, use Lexington altimeter setting and increase LPV DA to 1332 feet and all visibilities ¼ SM. Increase LNAV/VNAV DA to 1555 feet and all visibilities ¼ SM. Increase all MDAs 80 feet and LNAV visibility Cat C/D ½ SM, and Circling visibility Cat C/D ¼ SM. Baro-VNAV and VDP NA when using Lexington altimeter setting. Rwy 21 helicopter visibility reduction below ¼ SM NA.

MISSED APPROACH:  
Climb to 3000 direct COXIT and hold.

AWOS-3 <b>120.675</b>	LEXINGTON APP CON <b>120.15 259.3</b>	GCO <b>121.72</b>	CTAF <b>122.8</b>
--------------------------	--	----------------------	----------------------



ELEV 1019	TDZE 1007	1575 ▲			
		3000 COXIT			VGSI and RNAV glidepath not coincident (VGSI Angle 3.00/TCH 40).
*LNAV only.		XOEWE 2.3 NM to RW21			ISFUR 2600
RW21		1.4 NM to RW21			0.9 NM
1.4 NM		0.9 NM			2.6 NM
7 NM		7 NM			
FELPO		033°			213°
3000		213°			3000
GP 3.00°		TCH 57			
CATEGORY	A	B	C	D	
LPV DA	1257-¾	250 (300-¾)			
LNAV/VNAV DA	1480-1½	473 (500-1½)			
LNAV MDA	1460-1	453 (500-1)	1460-1½	453 (500-1½)	
CIRCLING	1540-1 521 (600-1)	1560-1 541 (600-1)	1740-2 721 (800-2)	1740-2¼ 721 (800-2¼)	