

WAAS CH 58332 W19A	APP CRS 186°	Rwy Idg 5002 TDZE 522 Apt Elev 522
--	------------------------	---

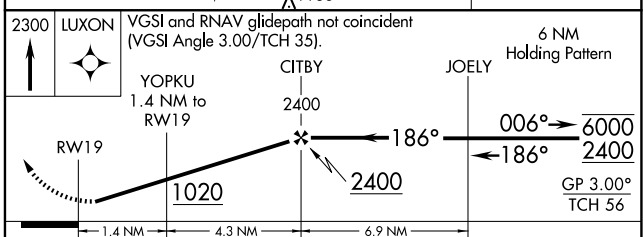
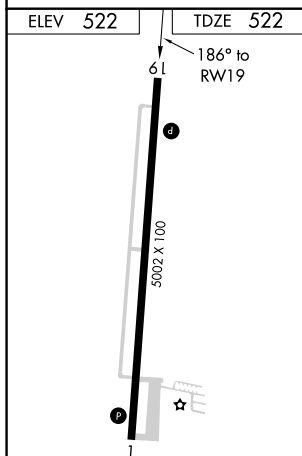
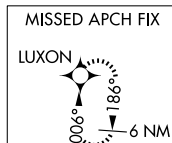
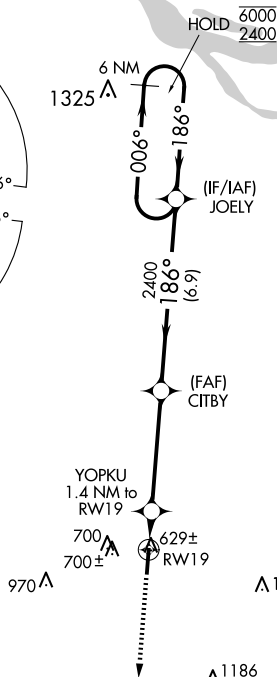
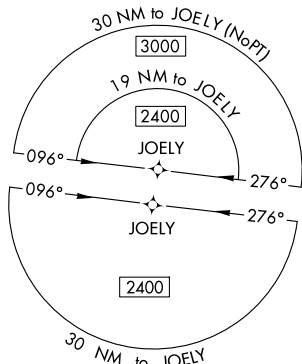
RNAV (GPS) RWY 19
MAYFIELD GRAVES COUNTY (M25)

RNP APCH - GPS.

Y Circling Rwy 1 NA at night. Rwy 19 helicopter visibility reduction below $\frac{3}{4}$ SM NA.
A Baro-VNAV NA when using Paducah altimeter setting. For uncompensated Baro-VNAV systems, LNAV/VNAV NA below -16°C or above 54°C . When local altimeter setting not received, use Paducah altimeter setting: increase LPV DA to 833 feet, LNAV/VNAV DA to 977 feet and all visibilities $\frac{1}{4}$ SM; increase all MDAs 80 feet and visibility Cats C and D $\frac{1}{4}$ SM.

MISSED APPROACH:
Climb to 2300 direct
LUXON and hold.

AWOS-3 120,625	MEMPHIS CENTER 133.65 292.15	UNICOM 122.8 (CTAF) ①
--------------------------	--	---------------------------------



CATEGORY		A	B	C	D
LPV	DA	772-1		250 (300-1)	
LNAV/ VNAV	DA	916-1½		394 (400-1½)	
LNAV	MDA	880-1		358 (400-1)	
C CIRCLING		1060-1	538 (600-1)	1060-1½ 538 (600-1½)	1280-2½ 758 (800-2½)