

VORTAC MMB 115.6 Chan 103	APP CRS 062°	Rwy Idg N/A TDZE N/A Apt Elev 2189
-----------------------------------------------	------------------------	---------------------------------------------------------------

VOR/DME-A
WEST WOODWARD (WWR)

T When local altimeter setting not received, use Gage
A altimeter setting and increase all MDA 40 feet.
Circling NA to Rwy 5 and 23.

MISSED APPROACH: Climb to 4000, then left turn via MMB
VORTAC R-062 to NARAH/MMB VORTAC 13 DME and hold.

AWOS-3 118.425	KANSAS CITY CENTER 126.95 379.2	UNICOM 122.8 (CTAF) ①
--------------------------	-------------------------------------------	---------------------------------

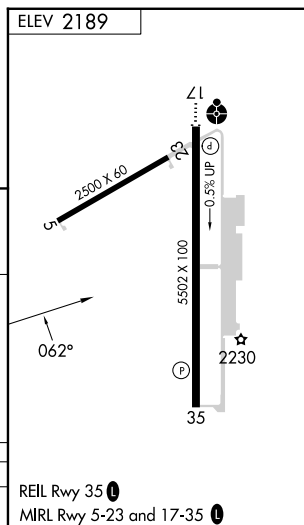
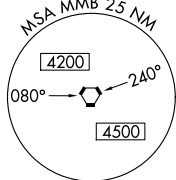
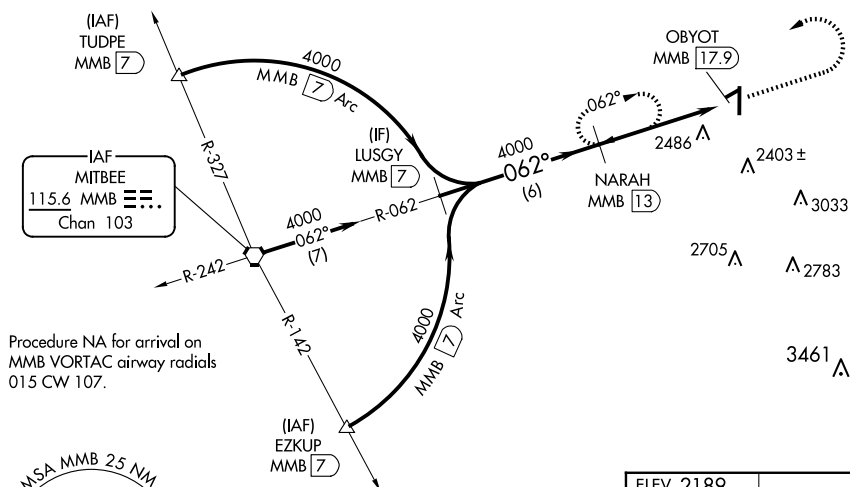


Diagram illustrating the Narah R-062 procedure. The diagram shows a flight path starting from the left, passing through LUSGY MMB (7), then a 062° turn to the right, passing through NARAH MMB (13). The distance between LUSGY and NARAH is 6 NM. After NARAH, the path continues to OBYOT MMB (17.9), with a distance of 4.9 NM between NARAH and OBYOT. A dashed line indicates a procedure turn NA. A legend in the top right shows a 4000 ft altitude, a right turn arrow, and the MMB R-062 and NARAH MMB (13) labels.

CATEGORY	A	B	C	D
CIRCLING	2820-1 631 (700-1)	2840-1 651 (700-1)	2940-2¼ 751 (800-2¼)	2960-2½ 771 (800-2½)

WOODWARD, OKLAHOMA
Amdt 7C 14JUL22

36°26'N-99°31'W

WEST WOODWARD (WWR)
VOR/DME-A