

WAAS  
CH **70614**  
**W17A**

APP CRS  
**172°**

Rwy Idg  
TDZE  
Apt Elev  
**5502**  
**2176**  
**2189**

**RNAV (GPS) RWY 17**

WEST WOODWARD (WWR)

RNP APCH

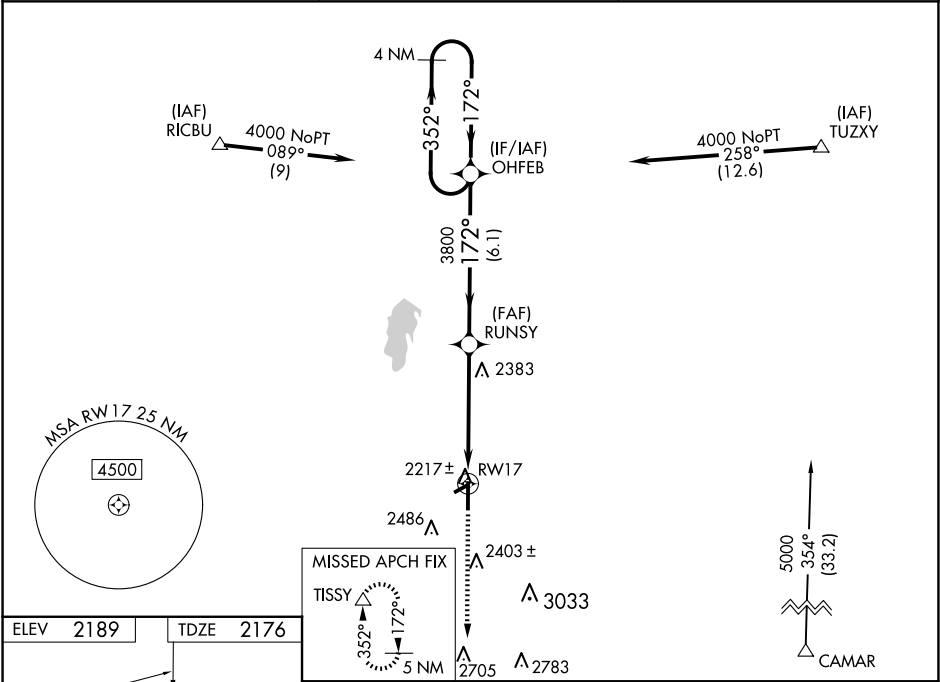
Baro-VNAV and VDP NA when using Gage altimeter setting. For uncompensated Baro-VNAV systems, LNAV/VNAV NA below -19°C or above 54°C. When local altimeter setting not received, use Gage altimeter setting and increase all DA/MDA 40 feet. Inop table does not apply. Circling Rwy 5, 23 NA at night.

ODALS

MISSED APPROACH:

Climb to 4500 direct TISSY and hold.

AWOS-3 <b>118.425</b>	KANSAS CITY CENTER <b>126.95 379.2</b>	UNICOM <b>122.8 (CTAF) 0</b>
--------------------------	---	---------------------------------



ELEV 2189	TDZE 2176
<div><div>172°</div><div>2500 X 60</div><div>5502 X 100</div><div>2230</div><div>35</div></div>	<div><div>4500</div><div>TISSY</div><div>△</div></div> <div><div>*LNAV only.</div><div>*1.6 NM to RW17</div><div>RUNSY</div><div>3800</div><div>OHFEB</div><div>4000</div><div>GP 3.00°</div><div>TCH 39</div></div>
REIL Rwy 35 0	MIRL Rwy 5-23 and 17-35 0
WOODWARD, OKLAHOMA	WEST WOODWARD (WWR)
Orig-B 07OCT21	RNAV (GPS) RWY 17