

WAAS CH <b>45740</b> <b>W32A</b>	APP CRS <b>320°</b>	Rwy Idg TDZE <b>67</b> Apt Elev <b>67</b>	<b>5000</b>
--	------------------------	---	-------------

RNAV (GPS) RWY 32

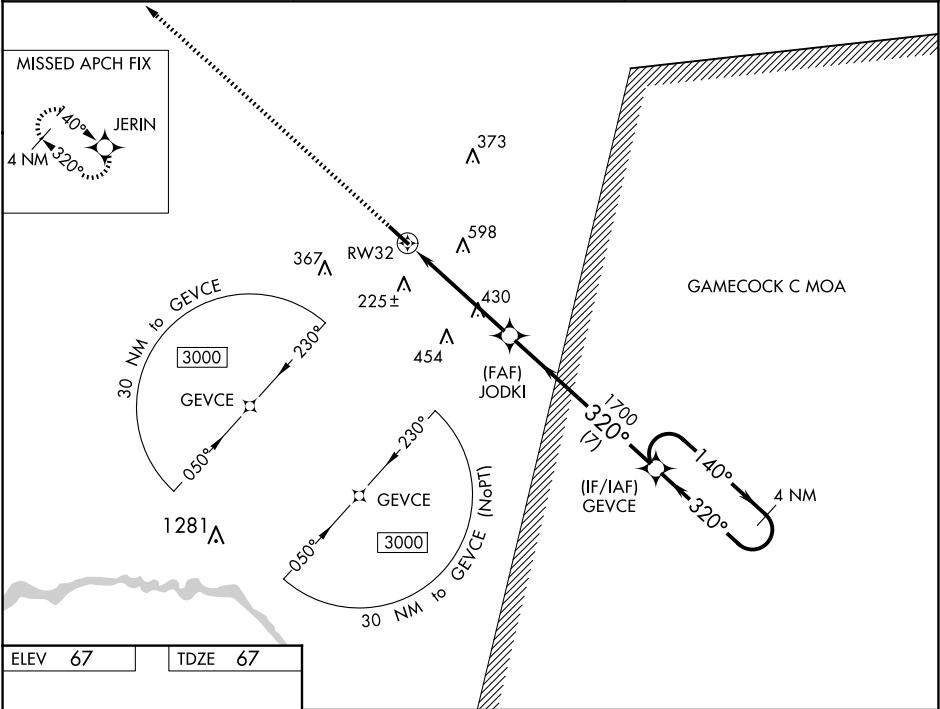
WILLIAMSBURG RGNL (CKI)

⚠

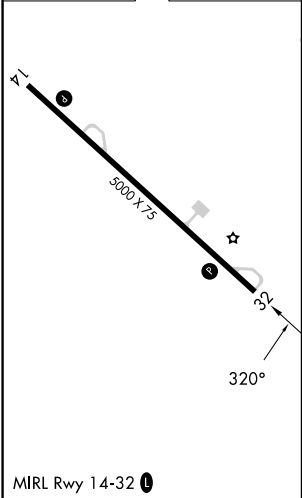
For uncompensated Baro-VNAV systems, LNAV/VNAV NA below -1.5°C (5°F) or above 54°C (130°F). Baro-VNAV and VDP NA when using Florence Rgnl altimeter setting. Rwy 32 helicopter visibility reduction below ¾SM NA. DME/DME RNP-0.3 NA.

MISSED APPROACH: Climb to 3000 direct JERIN and hold.

AWOS-3 <b>124.775</b>	MYRTLE BEACH APP CON ★ <b>127.4 257.95</b>	UNICOM <b>122.7 (CTAF) 0</b>
--------------------------	---	---------------------------------



ELEV 67	TDZE 67
---------	---------



3000

↑

JERIN

✴

\*LNAV only

RW32

1.8 NM to RW32

↓

JODKI

1700

✴

GEVCE

4 NM Holding Pattern

140° →

← 320°

3000

GP 3.00°

TCH 45

1.8 NM

3.2 NM

7 NM

CATEGORY	A		B		C	D
LPV DA			317-7⁄8		250 (300-7⁄8)	
LNAV/VNAV DA			334-7⁄8		267 (300-7⁄8)	
LNAV MDA	680-1	613 (700-1)	680-1¾		613 (700-1¾)	
CIRCLING	680-1	613 (700-1)	960-2¾ 893 (900-2¾)		960-3 893 (900-3)	