

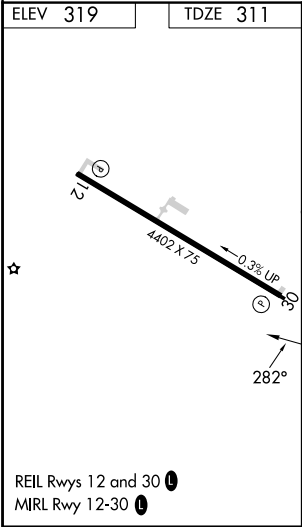
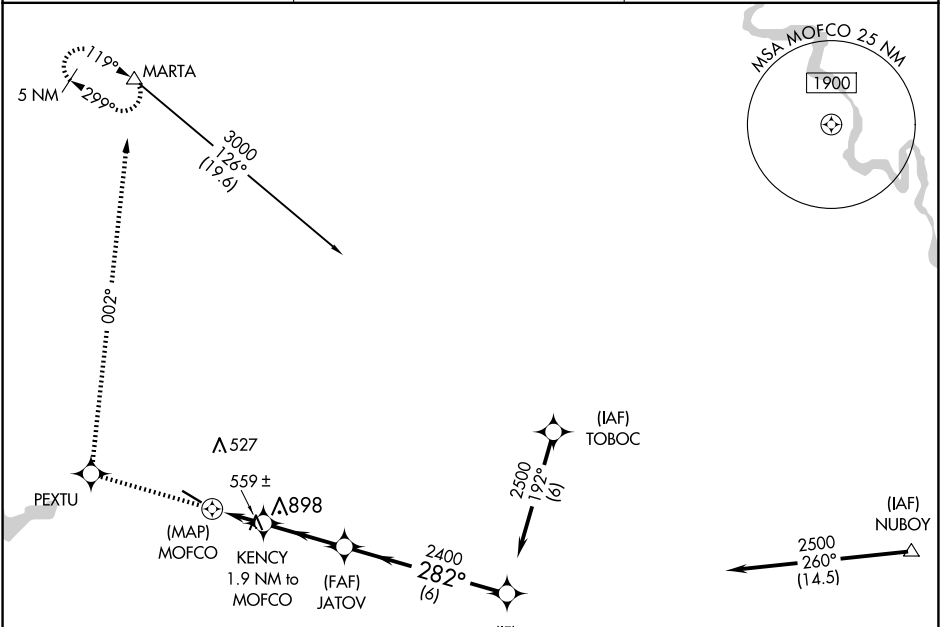
APP CRS	Rwy Idg	4402
282°	TDZE	311
	Apt Elev	319

RNAV (GPS) RWY 30

HART (3R4)

RNP APCH.	MISSED APPROACH: Climb to 4500 direct PEXTU and right turn via track 002° to MARTA and hold, continue climb in hold to 4500.
▼ NA	Rwy 30 helicopter visibility reduction below ¾ SM NA. Use Fort Polk altimeter setting; when not received, use Natchitoches altimeter setting and increase all MDA 20 feet.

POLK APP CON 123.7 261.3	GCO 135.075	UNICOM 122.8 (CTAF) 0
-----------------------------	----------------	--------------------------



4500	PEXTU	MARTA	VGSI and descent angles not coincident (VGSI Angle 3.50/TCH 56).	OXIDE
	↑	tr 002°		
		KENCY 1.9 NM to MOFCO	JATOV	2500
		MOFCO	2400	Procedure Turn NA
		1260		
	0.5	1.9 NM	3 NM	6 NM
CATEGORY	A	B	C	D
LNAV MDA	900-1	589 (600-1)	900-1¾ 589 (600-1¾)	NA