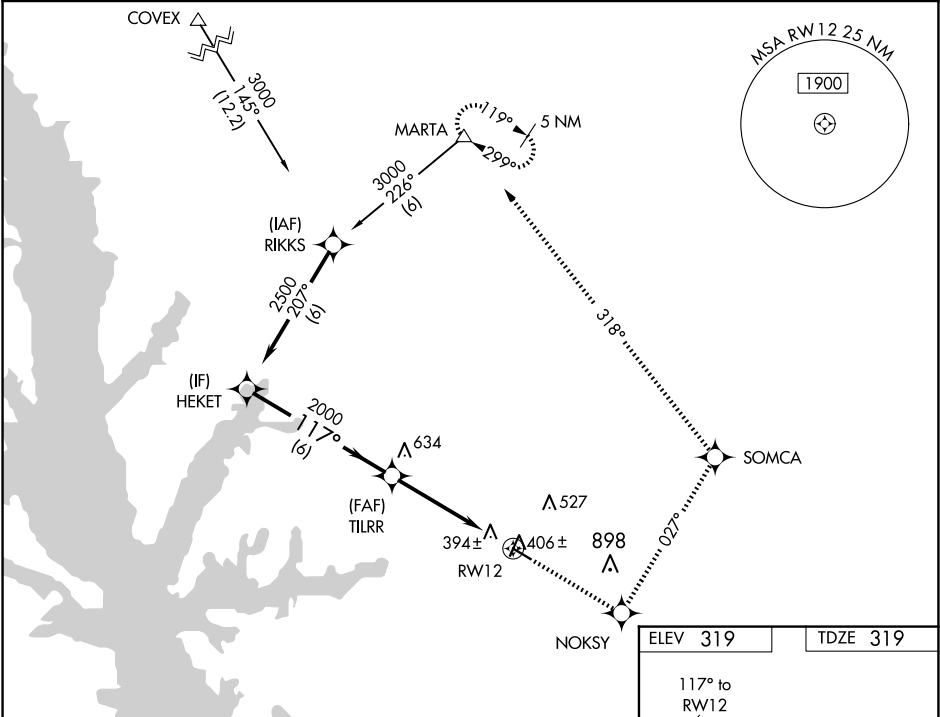


WAAS CH 78015 W12A	APP CRS 117°	Rwy Idg 4402 TDZE 319 Apt Elev 319
--	------------------------	---

RNAV (GPS) RWY 12
HART (3R4)

RNP APCH.	Baro-VNAV NA. Use Fort Polk altimeter setting; when not received, use Natchitoches altimeter setting; increase LPV DA to 715 feet, LNAV/VNAV DA to 767 feet, and all MDA 20 feet, and increase LPV visibility all Cats ¼ SM.	MISSED APPROACH: Climb to 4500 direct NOKSY and left turn via track 027° to SOMCA and left turn via track 318° to MARTA and hold.
-----------	--	---

POLK APP CON 123.7 261.3	GCO 135.075	UNICOM 122.8 (CTAF) 0
------------------------------------	-----------------------	---------------------------------



Procedure Turn NA	HEKET	4500 NOKSY	SOMCA	MARTA
GP 3.00° TCH 50	2500	117°	tr 027°	tr 318°
		TILRR		
	2000			
	6 NM	5.1 NM		
CATEGORY	A	B	C	D
LPV DA	713-1¼	394 (400-1¼)		NA
LNAV/VNAV DA	765-1½	446 (500-1½)		NA
LNAV MDA	820-1 501 (600-1)	820-1½ 501 (600-1½)		NA
CIRCLING	940-1 621 (700-1)	1280-3 961 (1000-3)		NA

117° to RWY 12

4402 X 75

0.3% UP

REIL Rwy 12 and 30 0

MIRL Rwy 12-30 0