

APP CRS
182°

Rwy Idg
3172

TDZE
N/A

Apt Elev
269

RNP APCH.

▼

▲

NA

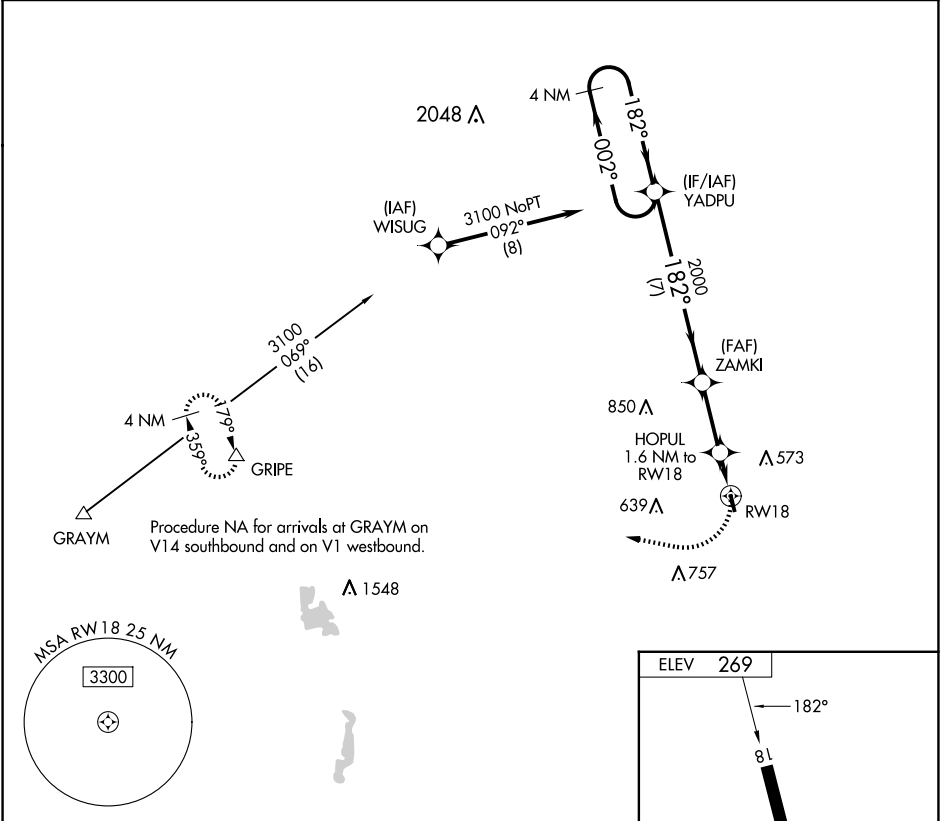
Use Pawtucket altimeter setting; when not received, procedure NA.
Procedure NA at night. Rwy 18 helicopter visibility reduction below 1 SM NA.

MISSED APPROACH:
Climbing right turn to 3000
direct GRIPE and hold.

SFZ AWOS-3
120.775

YANKEE APP CON
119.0

UNICOM
122.8 (CTAF)



Visual Segment - Obstacles.					3000	GRYPE
4 NM Holding Pattern YADPU						
3100 ← 002° 182° → 2000						
ZAMKI						
HOPUL 1.6 NM to RW18						
RW18						
1040						
7 NM 2.7 NM 1.6 NM						
CATEGORY	A	B	C	D	LIRL Rwy 18-36	
CIRCLING	880-1 611 (700-1)	980-1 711 (800-1)	1100-2½ 831 (900-2½)	NA		