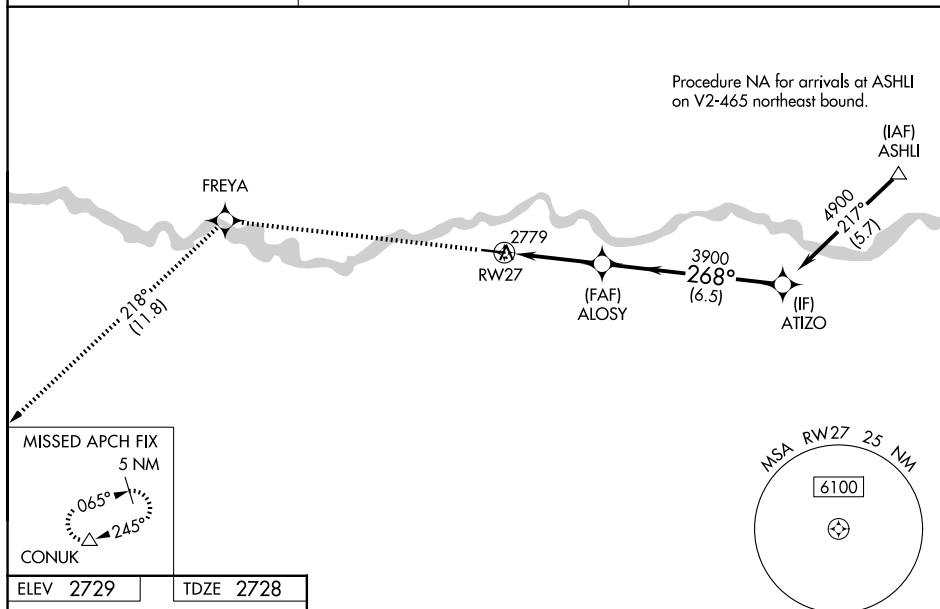


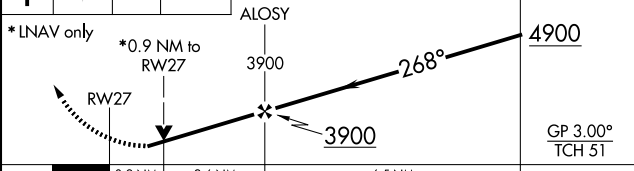
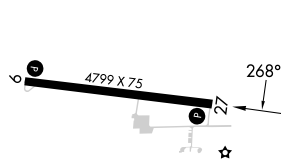
RNAV (GPS) RWY 27
TILLITT FLD (1S3)

MISSED APPROACH: Climb to 6000 direct FREYA and on track 218° to CONUK and hold.

UNICOM
122.8 (CTAF) **L**



6000	FREYA	tr	CONUK	VGSI and RNAV glidepath not coincident (VGSI Angle 3.00/TCH 29).	ΔTIZO
------	-------	----	-------	--	-------



		0.9 NM	2.6 NM	6.5 NM	
CATEGORY		A	B	C	D
LPV	DA	2978-1		250 (300-1)	
RNAV/ VNAV	DA	2978-1		250 (300-1)	
RNAV	MDA	3040-1		312 (400-1)	
CIRCLING		3160-1 431 (500-1)	3320-1 591 (600-1)	3340-1 ³ / ₄ 611 (700-1 ³ / ₄)	3700-3 971 (1000-3)