

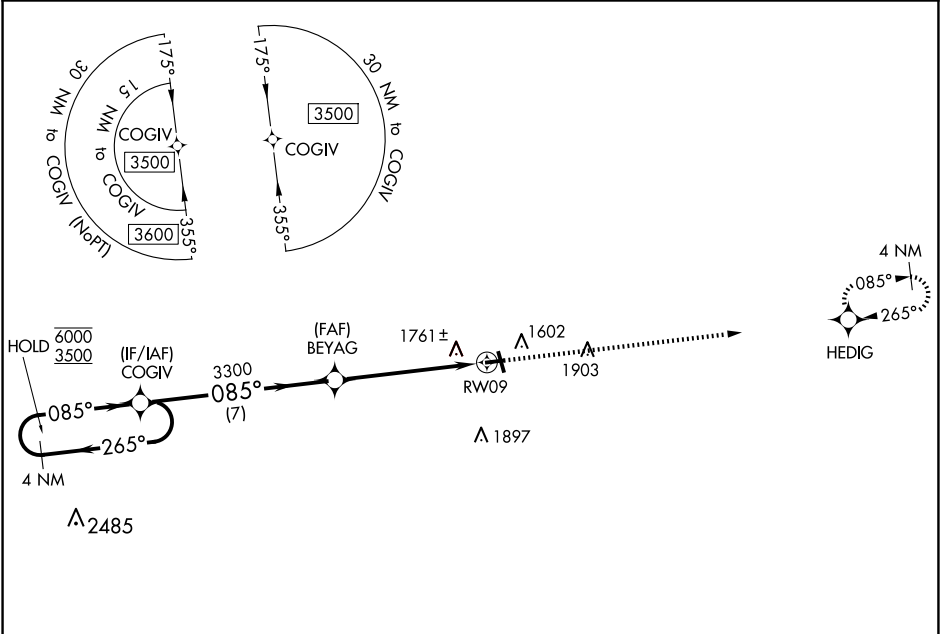


WAAS CH 82130 W09A	APP CRS 085°	Rwy Idg 3400 TDZE 1522 Apt Elev 1523
--	------------------------	---

RNAV (GPS) RWY 9
LANGLADE COUNTY (AIG)

RNP APCH.	MISSED APPROACH: Climb to 3400 direct HEDIG and hold.
 Rwy 9 helicopter visibility reduction below 3/4 SM NA.  For uncompensated Baro-VNAV systems, LNAV/VNAV NA below -18C or above 54°C.	

AWOS-3 119.075	MINNEAPOLIS CENTER 124.4 317.7	UNICOM 122.8 (CTAF) 0
--------------------------	--	---------------------------------



					ELEV 1523	TDZE 1522
<div>4 NM Holding Pattern</div> <div>COGIV</div> <div>6000 ← 265° 3500 → 085°</div> <div>GP 3.00° TCH 40</div> <div>BEYAG</div> <div>3300</div> <div>*1.6 NM to RW09</div> <div>RW09</div> <div>3400</div> <div>HEDIG</div> <div>*LNAV only.</div>						

EC-3, 07 AUG 2025 to 04 SEP 2025

EC-3, 07 AUG 2025 to 04 SEP 2025