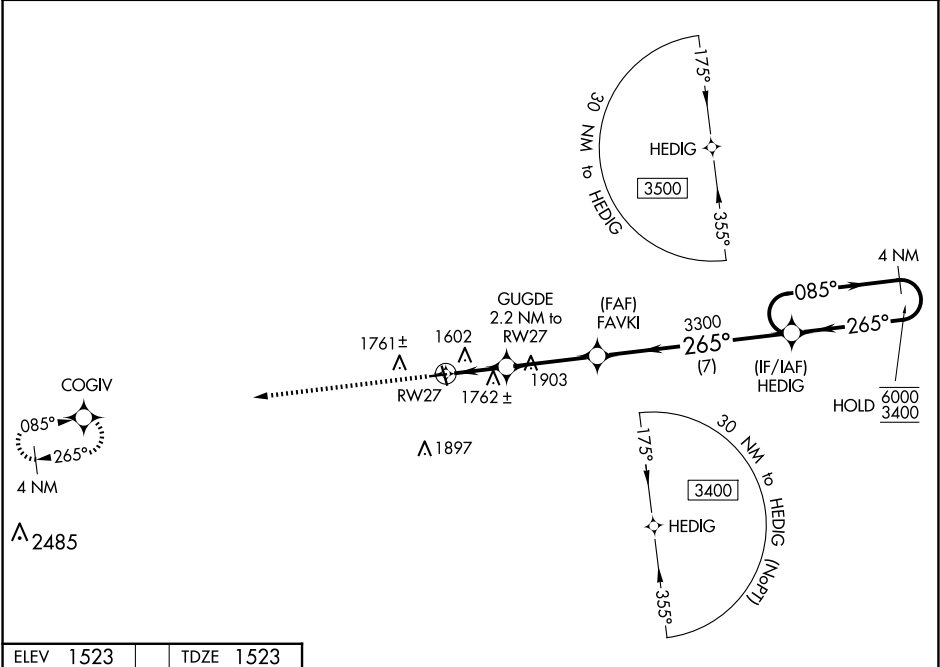


WAAS CH 45629 W27A	APP CRS 265°	Rwy Idg 3400 TDZE 1523 Apt Elev 1523
--	------------------------	---

RNAV (GPS) RWY 27
LANGLADE COUNTY (AIG)

RNP APCH.	MISSED APPROACH: Climb to 3500 direct COGIV and hold.
Rwy 27 helicopter visibility reduction below ¾ SM NA. For uncompensated Baro-VNAV systems, LNAV/VNAV NA below -18°C or above 54°C.	

AWOS-3 119.075	MINNEAPOLIS CENTER 124.4 317.7	UNICOM 122.8 (CTAF) 0
--------------------------	--	---------------------------------



ELEV 1523	TDZE 1523	3500	COGIV
*LNAV only.		4 NM Holding Pattern	
RW27		HEDIG	
GUGDE 2.2 NM to RW27		FAVKI	
*1.5 NM to RW27		3300	
*2260		3300	
1.5 NM		0.7 NM	
3.3 NM		7 NM	
CATEGORY	A	B	C
LPV DA	1773-1		250 (300-1)
LNAV/VNAV DA	1792-1		269 (300-1)
LNAV MDA	2020-1 497 (500-1)		2020-1 497 (500-1 3/8)
CIRCLING	2120-1 597 (600-1)		2260-2 737 (800-2)