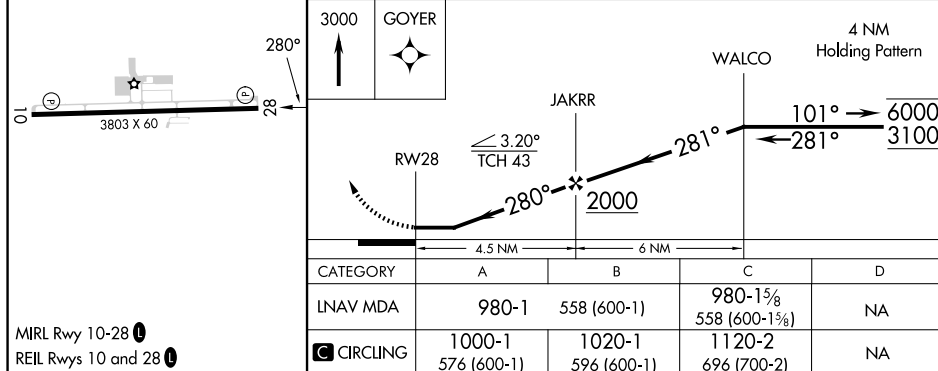
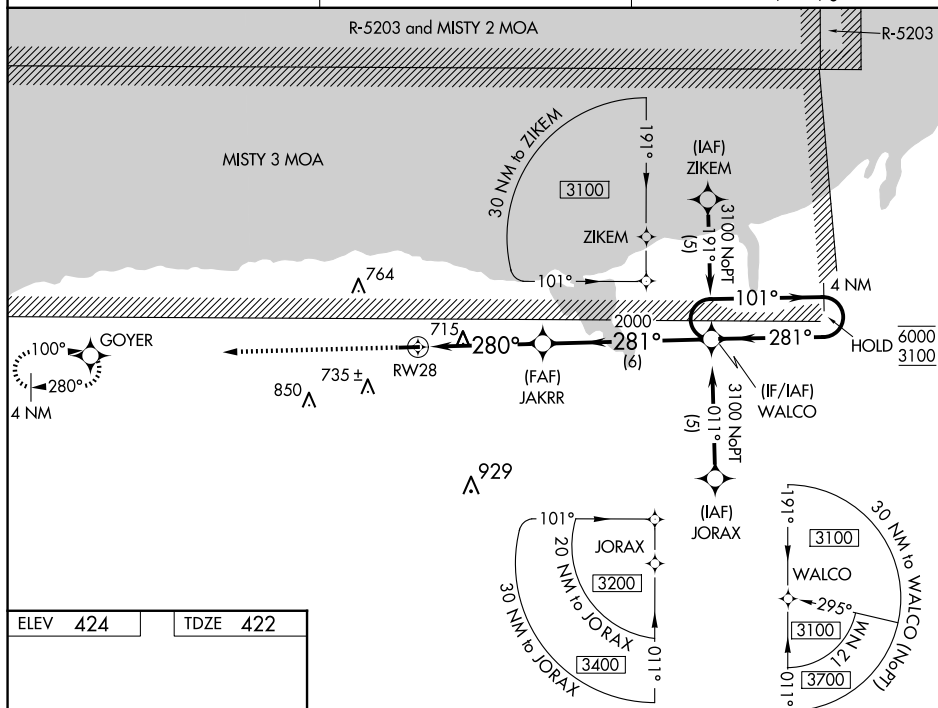


RNAV (GPS) RWY 28
WILLIAMSON/SODUS (SDC)

T Procedure NA at night. Rwy 28 helicopter visibility reduction below 1 SM NA. When
A local altimeter setting not received, use Rochester altimeter setting and increase all
MDAs 80 feet and LNAV visibility Cat C $\frac{1}{2}$ SM, and Circling visibility Cat C $\frac{1}{4}$ SM.

MISSED APPROACH.
Climb to 3000 direct
GOYER and hold.

UNICOM
122.8 (CTAF) **L**

NE-2, 07 AUG 2025 to 04 SEP 2025