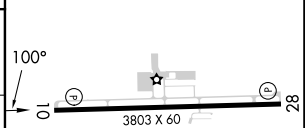
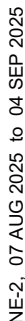


RNAV (GPS) RWY 10
WILLIAMSON/SODUS (SDC)

MISSED APPROACH: Climb to 3100 direct WALCO and hold. Continue climb-in-hold to 3100.

UNICOM
122.8 (CTAF) **L**

MIRL Rwy 10-28 **L**
REIL Rwy 10 and 28 **L**